



**PARKWAY**SCHOOLS

HIGHER EXPECTATIONS. BRIGHTER FUTURES.

# Financial Statements

*Date: January 2019*

PARKWAY SCHOOL DISTRICT  
MONTHLY FINANCIAL REPORT  
TABLE OF CONTENT

<u>DOCUMENT</u>	<u>PAGE</u>
EXECUTIVE SUMMARY. . . . .	1 - 2
GRAPHS - REVENUE, EXPENDITURE, CASH, AND FUND BALANCE .	3 - 5
RECAPITULATION OF FUNDS . . . . .	6
ACCRUAL BALANCE SHEET. . . . .	7
BREAKOUT OF CASH AND INVESTMENTS . . . . .	8
MODIFIED ACCRUAL REVENUE SCHEDULE . . . . .	9
EXPENDITURE SUMMARY BY OBJECT . . . . .	10
FOOD SERVICE INCOME AND EXPENSE . . . . .	11
EXPENDITURE SUMMARY BY BUILDING . . . . .	12
EXPENDITURE SUMMARY BY PROGRAM . . . . .	13 - 15
GLOSSARY . . . . .	16 - 17
PURCHASING REPORTS . . . . .	18 - 33



TO: Board of Education

DATE: March 13, 2019

FROM: Patricia Bedborough, CPA

RE: Executive Summary January 2019

Abstract

The January financial reports are attached. The revenues received are ahead of the collection from last year. We have also received our taxes paid under protest amount. The good news that our taxes paid under protest for 2018 decreased to \$28,032,642 from last year's \$44,861,283. With this is some bad news as well. Our amount that has been settled from past protests has increased by 30% from prior year. This will most likely result in a lower collection rate than budgeted. One additional line item of note is the increase of interest income. We project that we will receive about \$1 million in operating funds this year. The expenditures are slightly above the operating expenses from last year; however we are in line with the budget spending. A portion to this is from payroll expenses include a payout of approximately \$400,000 for retirees from last year that selected a payout. All financials have the revised budget included.

Future Issues

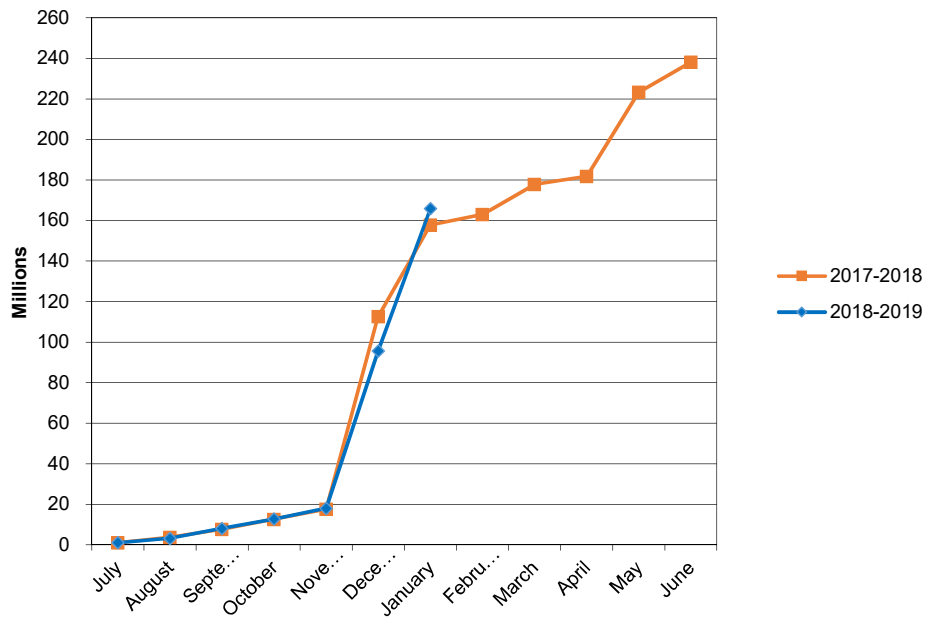
The following issues are still pending and could affect district finances in the future:

1. Health Insurance Costs – Higher health costs are a large portion of our benefit expenses. We have bid our pharmacy benefit manager through Business Health Coalition and with this, we will have substantial savings over market trends for our pharmacy beginning with October 1, 2018. We have opened our near site clinic for our employees and staff effective August. When looking at costs for 2019, we will have a zero dollar increase in premiums. We finished the 2018 year at a surplus. We experienced lower high cost cases and savings from our increased pharmacy rebates from our re-negotiated contract with Express Scripts.
2. Commercial Property Assessments Appeals – As you are aware this has been a struggle over the last several years. We have seen our collection rate fluctuate due to these settlements. We worked with the state auditor's office last year and have calculated an additional \$3.7 million in recoupment. We continue to work with St. Louis County. Our settlements through January have increased from \$100,000,000 in total from last year in AV to \$130,000,000 for July – January. This will most likely result in a collection rate lower than our budgeted 97%.

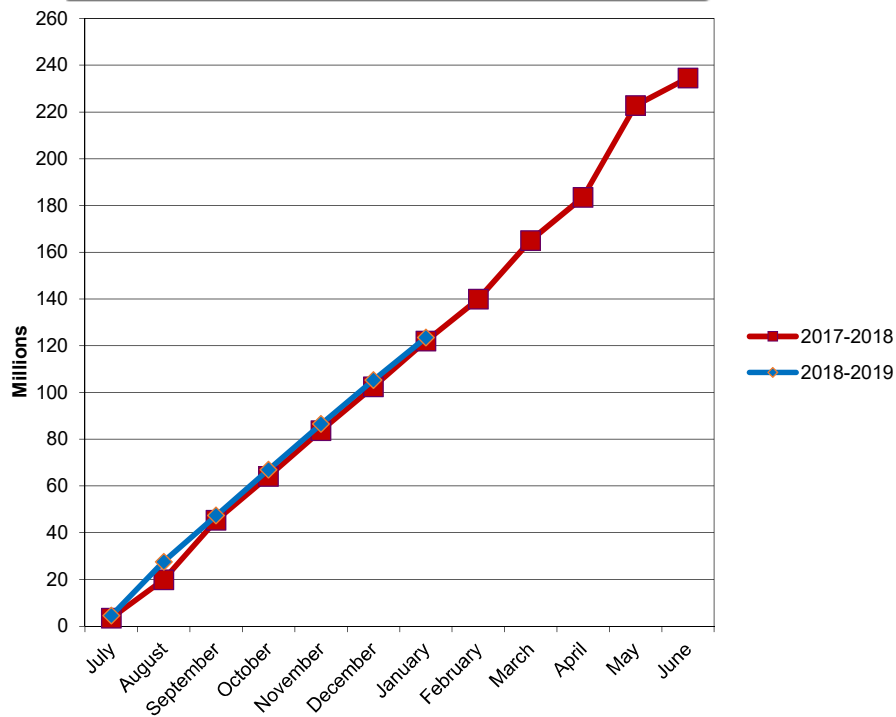
3. New Construction Assessments - In September we received our final amounts from St. Louis County. We had another strong year with new construction.
4. Interest Income –Interest rates are continuing to increase. As we make our investment of funds, we will be able to project an interest income this year. Our interest from our banking account is holding strong.
5. State Revenue –DESE will be adjusting the State Adequacy Target for the formula revenues. The State Adequacy Target is still well below the amount determined by the original formula legislation.
6. Unaccredited Schools – Parkway is continuing provide educational services for students from both Riverview Gardens and the Normandy School Districts that have been enrolled in Parkway. The tuition to be charged to the Normandy School District and to Riverview Garden’s School District is lower than Parkway’s regular tuition rates and is the rate charged to VICC. The students are able to remain in Parkway until they are at a natural transition and then will return to their home district.
7. Spot Market Purchases – For information purposes, fiscal year-to-date purchases under the spot market procurement policy are as follows:

Fuel	\$	252,347.18
Paper	\$	130,830.00
Trash Liner	\$	30,492.00
Produce:	\$	49,295.00

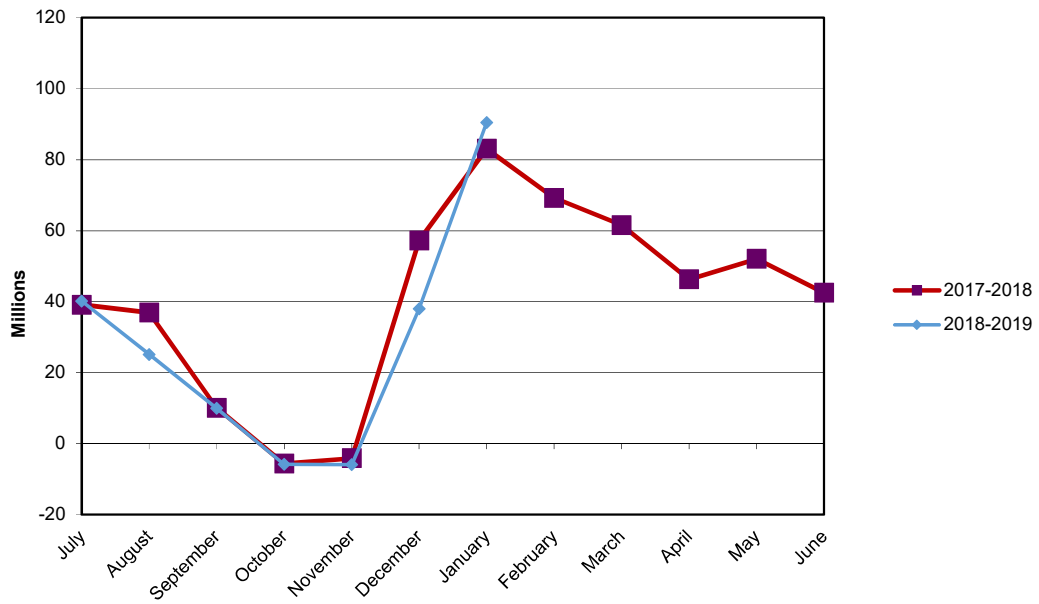
## PARKWAY SCHOOL DISTRICT ACTUAL OPERATING REVENUE

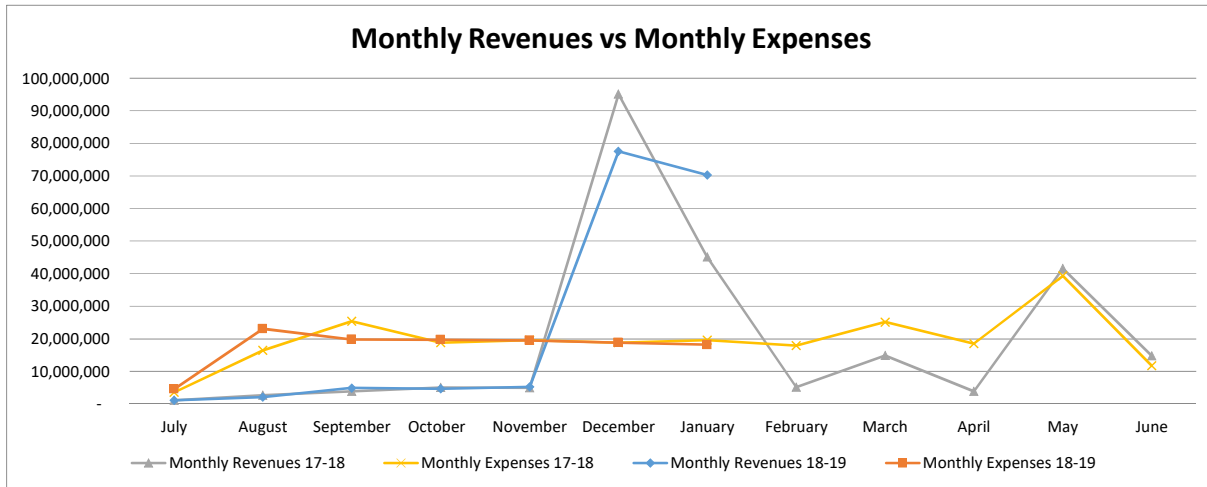
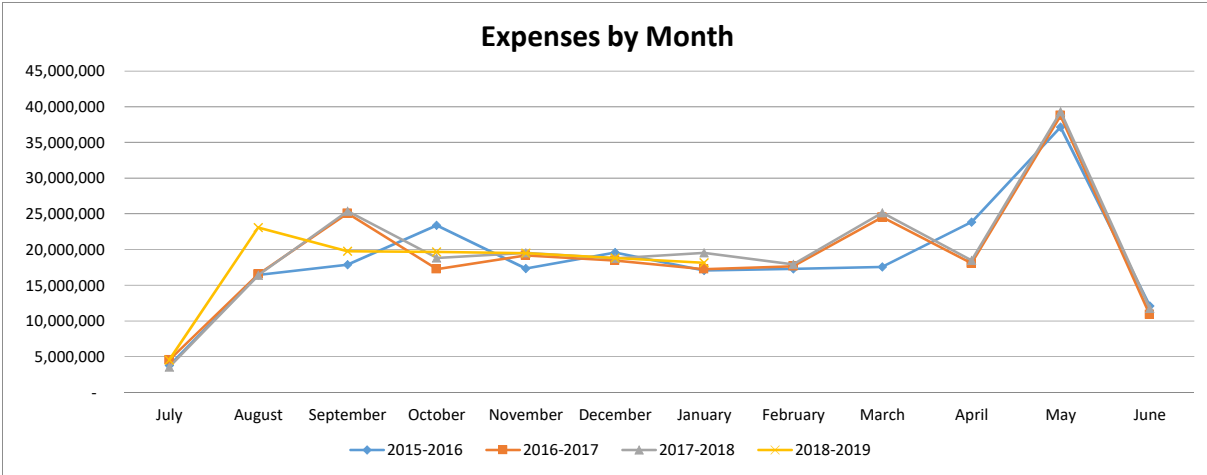
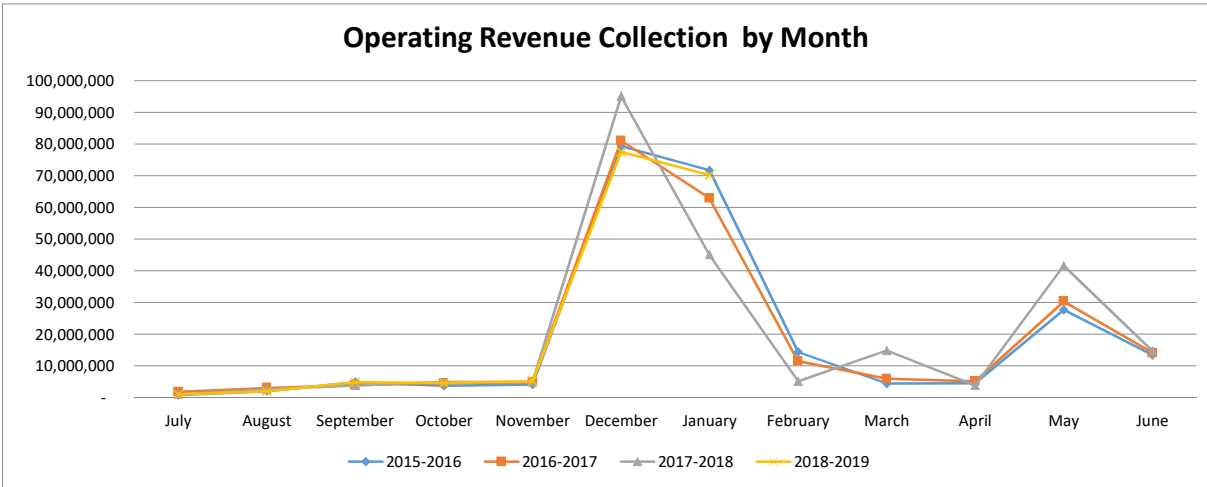


## PARKWAY SCHOOL DISTRICT ACTUAL OPERATING EXPENDITURES



## PARKWAY SCHOOL DISTRICT OPERATING FUND CASH AND INVESTMENTS





**Parkway School District  
Recapitulation of Funds  
Budget 2018-2019 With Restatement of Opening Balances**

FY2019 Full Year Projection

	<b>Operating</b>	<b>Debt Service</b>	<b>Capital Projects</b>	<b>2014 Bond Issue</b>	<b>All Funds</b>
Beginning Fund Balance	46,492,486	36,717,985	2,253,613	17,496,421	102,960,505
Revenues	240,064,725	23,671,221	7,427,439	15,000	271,178,385
Expenses	238,077,339	25,433,648	3,592,730	17,511,421	284,615,138
Ending Fund Balance	48,479,872	34,955,558	6,088,322	-	89,523,752

ACTUAL FY19 THROUGH 1/31/19

	<b>Operating</b>	<b>Debt Service</b>	<b>Capital Projects</b>	<b>2014 Bond Issue</b>	<b>All Funds</b>
Beginning Fund Balance	46,492,486	36,717,985	2,253,613	17,496,421	102,960,505
Revenues	165,772,331	18,365,121	5,892,358	147,741	190,177,551
Expenses	123,459,810	3,464,182	1,739,693	12,800,894	141,464,579
Ending Fund Balance	88,805,007	51,618,924	6,406,278	4,843,268	151,673,477

ACTUAL FY18 THROUGH 1/31/18

	<b>Operating</b>	<b>Debt Service</b>	<b>Capital Projects</b>	<b>2014 Bond Issue</b>	<b>All Funds</b>
Beginning Fund Balance	44,415,182	13,767,360	652,502	38,079,930	96,914,974
Revenues	157,795,755	47,286,508	2,337,389	107,669	207,527,321
Expenses	121,904,731	40,031,775	2,413,087	13,293,846	177,643,439
Ending Fund Balance	80,306,206	21,022,093	576,804	24,893,753	126,798,856



**PARKWAY SCHOOL DISTRICT  
ACCRUAL BALANCE SHEET  
January 31, 2019**

	<b>TOTAL- ALL FUNDS 01/31/19</b>	<b>TOTAL- ALL FUNDS 1/31/2018</b>
<b>ASSETS</b>		
Cash & Investments	\$ 167,437,558	140,093,699
Accounts Receivable	\$ 612,645	248,513
Inventories	\$ 814,588	663,073
Prepaid Expenses	\$ 1,418,681	1,288,174
Land	\$ 3,457,837	3,457,837
Land Improvements	\$ 17,072,007	18,034,643
Buildings/Improvements	\$ 163,361,982	151,631,814
Construction in Progress	\$ 50,522,194	52,539,700
Equipment	\$ 12,674,728	13,815,316
<b>Total Assets</b>	<b>\$ 417,372,220</b>	<b>381,772,769</b>
<b>LIABILITIES &amp; FUND BALANCE</b>		
Accounts Payable - Operating Funds	\$ 1,154,303	734,028
Accounts Payable - Bond Issue Funds	\$ 26,246	25,864
Wages, Payroll Taxes, and Benefits Payable	\$ 3,285,233	4,044,292
Bonds Payable	\$ 206,945,000	201,620,000
Interest Payable	\$ 2,578,845	1,924,587
Liability for Compensated Absences	\$ 1,502,251	1,432,869
Liability for Early Retirement	\$ 902,168	1,932,641
<b>Total Liabilities</b>	<b>\$ 216,533,901</b>	<b>211,714,281</b>
Bond Issue Fund Balance	\$ 4,843,268	24,893,753
Debt Service Fund Balance	\$ 51,618,924	21,022,093
Capital Projects Fund Balance	\$ 6,406,278	576,804
Equity in Fixed Assets less Long Term Liabilities	\$ 35,160,484	32,569,213
Medical Fund Balance	\$ 14,004,358	10,772,821
Operating Fund Balance	\$ 88,805,007	80,306,206
<b>Total Fund Balance</b>	<b>\$ 200,838,319</b>	<b>170,140,890</b>
<b>TOTAL LIABILITIES &amp; FUND BALANCE</b>	<b>\$ 417,372,220</b>	<b>381,855,171</b>

**BREAKOUT OF CASH & INVESTMENT BALANCE**

	<u>01/31/19</u>	<u>1/31/2018</u>
MEDICAL FUND CASH	14,144,213	10,772,821
DEBT SERVICE FUND CASH	48,668,373	21,000,811
DEBT SERVICE FUND INVESTMENTS	2,950,552	7,747
BOND ISSUE FUND CASH	4,809,217	6,519,618
BOND ISSUE FUND INVESTMENTS	7,805	18,726,893
CAPITAL PROJECTS FUND CASH	6,458,770	-
OPERATING FUND CASH	90,398,628	83,065,810
	<hr/>	<hr/>
<b>TOTAL</b>	167,437,558	140,093,699

**RESTRICTED RESERVE**

	<u>01/31/19</u>	<u>1/31/2018</u>
FOOD SERVICE	242,150	568,399
MEDICAL BENEFITS	14,004,358	10,772,821
STUDENT ACTIVITY	3,146,723	3,032,694
	<hr/>	<hr/>
<b>TOTAL</b>	17,393,231	14,373,913

PARKWAY SCHOOL DISTRICT  
MODIFIED ACCRUAL REVENUE SCHEDULE  
TOTAL ALL FUNDS

	YEAR TO DATE 1-31-2019				YEAR TO DATE 1-31-2018			
	BUDGETED REVENUE	REVENUE REALIZED	% REALIZED	BALANCE TO BE REALIZED	REVENUE** 6/30/2018	REVENUE REALIZED	% REALIZED	BALANCE TO BE REALIZED
<b>LOCAL</b>								
Property Taxes	172,325,159	137,476,588	79.78%	34,848,571	168,199,861	130,391,305	77.52%	37,808,556
Sales Tax	15,819,210	6,463,052	40.86%	9,356,158	15,440,981	6,043,506	39.14%	9,397,475
M&M Surtax	4,733,790	2,878,404	60.81%	1,855,386	4,857,510	2,432,395	50.07%	2,425,115
Food Service	4,070,811	2,407,412	59.14%	1,663,399	4,209,014	1,646,463	39.12%	2,562,551
Other Local	8,256,010	1,579,087	19.13%	6,676,923	9,245,144	2,334,620	25.25%	6,910,524
VICC-VST Revenue	7,431,350	2,445,142	32.90%	4,986,208	7,890,932	2,408,612	30.52%	5,482,320
<b>TOTAL LOCAL</b>	<b>212,636,330</b>	<b>153,249,685</b>	<b>72.07%</b>	<b>59,386,645</b>	<b>209,843,442</b>	<b>145,256,901</b>	<b>69.22%</b>	<b>64,586,541</b>
<b>INTEREST</b>	<b>894,906</b>	<b>418,142</b>	<b>46.72%</b>	<b>476,764</b>	<b>798,119</b>	<b>224,027</b>	<b>28.07%</b>	<b>574,092</b>
<b>COUNTY</b>	<b>3,216,007</b>	<b>995,972</b>	<b>30.97%</b>	<b>2,220,035</b>	<b>3,299,694</b>	<b>722,279</b>	<b>21.89%</b>	<b>2,577,415</b>
<b>STATE</b>								
Basic Formula	2,413,326	1,270,216	52.63%	1,143,110	2,702,394	1,316,922	48.73%	1,385,472
Classroom Trust	6,569,703	3,249,312	49.46%	3,320,391	6,406,422	3,385,235	52.84%	3,021,187
Transportation	1,121,936	719,538	64.13%	402,398	1,168,043	679,968	58.21%	488,075
Other State	1,586,861	1,341,999	84.57%	244,862	1,998,855	1,117,286	55.90%	881,569
<b>TOTAL STATE</b>	<b>11,691,826</b>	<b>6,581,065</b>	<b>56.29%</b>	<b>5,110,761</b>	<b>12,275,714</b>	<b>6,499,411</b>	<b>52.95%</b>	<b>5,776,303</b>
<b>FEDERAL</b>								
Federal Food Service	2,112,600	1,020,823	48.32%	1,091,777	2,145,449	1,034,427	48.21%	1,111,022
Other Federal Entitlements	3,178,963	1,194,946	37.59%	1,984,017	2,991,905	1,176,235	39.31%	1,815,670
<b>TOTAL FEDERAL</b>	<b>5,291,563</b>	<b>2,215,769</b>	<b>41.87%</b>	<b>3,075,794</b>	<b>5,137,354</b>	<b>2,210,662</b>	<b>43.03%</b>	<b>2,926,692</b>
<b>OTHER FINANCING SOURCES</b>								
Transportation Reimbursement	2,748,874	505,326	18.38%	2,243,548	2,884,503	1,063,900	36.88%	1,820,603
Tuition From Other Districts	50,000	30,827	61.65%	19,173	206,142	98,427	47.75%	107,715
Sale Of Property	35,219	8,475	24.06%	26,744	35,219	9,061	25.73%	26,158
<b>TOTAL OTHER FINANCING SOURCES</b>	<b>2,834,093</b>	<b>544,628</b>	<b>19.22%</b>	<b>2,289,465</b>	<b>3,125,864</b>	<b>1,171,388</b>	<b>37.47%</b>	<b>1,954,476</b>
<b>SUB-TOTAL OPERATING REVENUE</b>	<b>236,564,725</b>	<b>164,005,261</b>	<b>69.33%</b>	<b>72,559,464</b>	<b>234,480,187</b>	<b>156,084,668</b>	<b>66.57%</b>	<b>78,395,519</b>
<b>STUDENT ACTIVITIES</b>	<b>3,500,000</b>	<b>1,767,070</b>	<b>50.49%</b>	<b>1,732,930</b>	<b>3,623,837</b>	<b>1,711,087</b>	<b>47.22%</b>	<b>1,912,750</b>
<b>TOTAL OPERATING REVENUE</b>	<b>240,064,725</b>	<b>165,772,331</b>	<b>69.05%</b>	<b>74,292,394</b>	<b>238,104,024</b>	<b>157,795,755</b>	<b>66.27%</b>	<b>80,308,269</b>
<b>NON-OPERATING REVENUES</b>								
2015 Bond Issue Interest/Premium	15,000	147,741	984.94%	(132,741)	302,657	107,669	35.57%	194,988
Refunding Bond Issuance	-	-	0.00%	-	27,405,000	-	0.00%	27,405,000
Refunding Bond Issue Premium	-	-	0.00%	-	2,276,429	-	0.00%	2,276,429
Debt Service Property Taxes	22,532,176	17,975,591	79.78%	4,556,585	22,185,774	17,198,778	77.52%	4,986,996
Debt Service Interest/Premium	505,192	274,539	54.34%	230,653	729,102	2,590,971	355.36%	(1,861,869)
Debt Service County Revenue	633,853	114,991	18.14%	518,862	642,409	27,496,759	4280.26%	(26,854,350)
Cap. Projects Property Taxes	6,883,809	5,491,727	79.78%	1,392,082	2,263,855	1,754,977	0.00%	508,878
Capital Projects Other	243,396	164,111	67.43%	135,889	412,470	32,738	0.00%	379,732
Capital Projects Grants	-	-	0.00%	-	290,055	290,055	0.00%	-
Marketing Agreement	300,000	236,250	78.75%	-	378,750	259,583	68.54%	119,167
Capital Interest/Premium	234	270	115.38%	(36)	236	36	100.00%	200
<b>TOTAL ALL REVENUE SOURCES</b>	<b>271,178,385</b>	<b>190,177,551</b>	<b>70.13%</b>	<b>81,000,834</b>	<b>294,990,760</b>	<b>207,527,321</b>	<b>70.35%</b>	<b>87,463,439</b>

EXPENDITURE SUMMARY BY OBJECT  
TOTAL ALL FUNDS  
January 31, 2019

	BUDGET 2018-2019	ACTUAL EXPENDITURES YTD 12/31/2019	% EXPENDED 2018-2019	ACTUAL** EXPENDITURES 06/30/2018	ACTUAL EXPENDITURES YTD 12/31/2018	% EXPENDED 2017-2018	CHANGE FROM PRIOR YEAR \$	%
<b>SALARIES</b>								
Certificated	100,407,728	49,531,912	49.33%	98,362,989	48,616,302	49.43%	915,610	-0.09%
Classified	38,863,174	19,942,175	51.31%	37,714,509	19,695,955	52.22%	246,220	-0.91%
Administrative	11,987,413	6,987,672	58.29%	11,740,688	6,796,835	57.89%	190,837	0.40%
<b>TOTAL SALARIES</b>	<b>151,258,315</b>	<b>76,461,759</b>	<b>50.55%</b>	<b>147,818,186</b>	<b>75,109,092</b>	<b>50.81%</b>	<b>1,352,667</b>	<b>-0.26%</b>
<b>BENEFITS</b>								
Retirement, Social Security and Medicare	25,037,375	12,914,458	51.58%	25,027,067	12,725,290	50.85%	189,168	0.73%
Medical, Dental and Life Insurance	28,999,615	14,993,649	51.70%	27,759,590	14,769,859	53.21%	223,790	-1.50%
<b>TOTAL BENEFITS</b>	<b>54,036,990</b>	<b>27,908,107</b>	<b>51.65%</b>	<b>52,786,657</b>	<b>27,495,149</b>	<b>52.09%</b>	<b>412,958</b>	<b>-0.44%</b>
<b>PURCHASED SERVICES</b>								
Substitute Services	2,948,473	1,490,143	50.54%	3,108,104	1,591,419	51.20%	(101,276)	-0.66%
Tuition	148,000	36,224	24.48%	137,925	120,217	87.16%	(83,993)	-62.69%
Professional Services	2,848,330	1,288,702	45.24%	1,876,035	1,322,742	70.51%	(34,040)	-25.26%
Audit	34,000	33,800	99.41%	29,000	29,000	100.00%	4,800	-0.59%
Technical Services	92,400	83,265	90.11%	156,988	99,405	63.32%	(16,140)	26.79%
Legal Services	200,000	69,915	34.96%	171,663	98,907	57.62%	(28,992)	-22.66%
Property Services	2,184,431	1,229,741	56.30%	2,181,468	1,404,784	64.40%	(175,043)	-8.10%
Travel & Contracted Trans.	1,748,554	753,878	43.11%	2,354,238	821,998	34.92%	(68,120)	8.20%
Property Insurance	864,809	823,526	95.23%	830,850	780,247	93.91%	43,279	1.32%
Liability Insurance	847,639	800,343	94.42%	801,690	802,234	100.07%	(1,891)	-5.65%
Other Purchased Services	1,686,392	827,800	49.09%	1,664,595	710,100	42.66%	117,700	6.43%
<b>TOTAL PURCHASED SERVICES</b>	<b>13,603,028</b>	<b>7,437,337</b>	<b>54.67%</b>	<b>13,312,556</b>	<b>7,781,053</b>	<b>58.45%</b>	<b>(343,716)</b>	<b>-3.77%</b>
<b>CONSUMABLES</b>								
General Supplies	3,955,734	1,852,363	46.83%	3,977,905	2,107,479	52.98%	(255,116)	-6.15%
Instructional Supplies	8,320,158	4,426,684	53.20%	6,437,240	4,205,314	65.33%	221,370	-12.12%
Library Books	279,575	171,026	61.17%	272,414	149,788	54.99%	21,238	6.19%
Energy Services	4,072,900	2,280,826	56.00%	3,989,929	2,010,052	50.38%	270,774	5.62%
Food Service Supplies	3,000,000	1,509,469	50.32%	2,462,106	1,658,538	67.36%	(149,069)	-17.05%
<b>TOTAL CONSUMABLES</b>	<b>19,628,367</b>	<b>10,240,368</b>	<b>52.17%</b>	<b>17,139,594</b>	<b>10,131,171</b>	<b>59.11%</b>	<b>109,197</b>	<b>-6.94%</b>
<b>OPERATING LEASES</b>								
	50,639	41,215	81.39%	37,823	37,823	100.00%	3,392	-18.61%
<b>SUBTOTAL OPERATING EXPENSES</b>								
	238,577,339	122,088,786	51.17%	231,094,816	120,554,288	52.17%	1,534,498	-0.99%
<b>STUDENT ACTIVITIES</b>								
	3,500,000	1,371,024	39.17%	3,431,904	1,350,443	39.35%	20,581	-0.18%
<b>ANTICIPATED EXPENDITURE SAVINGS</b>								
	(4,000,000)	-	0.00%	-	-	0.00%	-	0.00%
<b>TOTAL OPERATING EXPENSES</b>								
	238,077,339	123,459,810	51.86%	234,526,720	121,904,731	51.98%	1,555,079	-0.12%
<b>CAPITAL OUTLAY - NON BOND EXPENSES</b>								
Land Improvement	100,000	23,412	23.41%	439,404	365,525	83.19%	(342,113)	-59.77%
Building Alterations	130,000	(166,025)	-127.71%	109,544	74,697	68.19%	(240,722)	-195.90%
General Equipment	351,478	211,008	60.03%	592,157	1,575,567	266.07%	(1,364,559)	-206.04%
Instructional Equipment	861,619	72,207	8.38%	303,333	66,516	21.93%	5,691	-13.55%
Technology Equipment	200,000	147,993	74.00%	209,280	53,770	25.69%	94,223	48.30%
Student Activity	100,000	79,751	79.75%	96,799	63,506	65.61%	14,144	14.14%
Vehicles	240,000	149,853	62.44%	5,080	-	0.00%	149,853	62.44%
School Buses	1,278,159	1,010,196	79.04%	1,159,675	-	100.00%	1,010,196	-20.96%
<b>TOTAL CAPITAL OUTLAY</b>	<b>3,261,256</b>	<b>1,528,395</b>	<b>46.87%</b>	<b>2,915,272</b>	<b>2,199,581</b>	<b>75.45%</b>	<b>(671,186)</b>	<b>-28.59%</b>
<b>BOND ISSUE EXPENDITURES</b>								
	17,511,421	12,800,894	73.10%	20,886,166	13,293,846	63.65%	(492,952)	9.45%
<b>CAPITAL FUND - BUS LEASES</b>								
	331,474	211,298	63.74%	328,980	213,506	64.90%	(2,208)	-1.15%
<b>DEBT SERVICE - GO BONDS</b>								
	25,433,648	3,464,182	13.62%	30,288,090	40,031,775	132.17%	(36,567,593)	-118.55%
<b>GRAND TOTAL EXPENSES</b>								
	284,615,138	141,464,579	49.70%	288,945,228	177,643,439	61.48%	(36,178,860)	-11.78%

**FOOD SERVICE  
STATEMENT OF INCOME AND EXPENSE  
January 31, 2019**

		<u>BUDGET FY19</u>	<u>CURRENT MONTH</u>	<u>ACTUAL EXPENDITURES YTD 1/31/2019</u>	<u>% EXPENDED</u>	<u>PRIOR YEAR ACTUAL FY18</u>	<u>PRIOR YEAR TO DATE January 2018</u>	<u>PRIOR YEAR % EXPENDED</u>
<b>RESERVE FOOD SERVICE SURPLUS</b>	-77.6%		\$242,150	\$108,211		\$135,350	\$482,775	
<b>INCOME</b>								
<b>LOCAL</b>	478.2%	4,070,811	\$414,659	\$2,407,412	59.14%	\$4,209,014	\$416,393	9.89%
<b>STATE</b>	439.2%	38,039	\$2,490	\$13,807	36.30%	\$23,694	\$2,561	10.81%
<b>FEDERAL</b>	443.4%	2,112,600	\$222,489	\$1,239,188	58.66%	\$2,141,863	\$228,025	10.65%
<b>TOTAL INCOME</b>	465.8%	6,221,450	\$639,638	\$3,660,407	58.84%	\$6,374,571	\$646,978	10.15%
<b>COST OF GOODS SOLD:</b>								
<b>Beginning Inventory</b>	-29.9%		\$287,110	\$167,832		\$132,849	\$239,546	180.31%
<b>Add: Purchases-Food</b>	372.4%	3,000,000	\$320,904	\$1,509,469	50.32%	\$2,590,905	\$319,548	12.33%
<b>Purchases-Other</b>	592.3%	236,280	\$33,636	\$166,275	70.37%	\$186,290	\$24,019	12.89%
<b>Goods Available</b>	216.2%		\$641,650	\$1,843,576		\$2,910,044	\$583,112	20.04%
<b>Less: Ending Inventory</b>	5.8%		\$326,100	\$326,100		\$167,832	\$308,136	183.60%
<b>TOTAL COST OF GOODS</b>	451.9%	3,236,280	\$315,550	\$1,517,476	46.89%	\$2,742,212	\$274,976	10.03%
<b>GROSS MARGIN</b>	476.1%	\$2,985,170	\$324,088	\$2,142,931	71.79%	\$3,632,360	\$372,002	10.24%
<b>OPERATION COSTS:</b>								
<b>Salaries</b>	643.0%	2,144,495	\$166,583	\$1,235,651	57.62%	\$2,359,241	\$166,308	7.05%
<b>Fringe Benefits</b>	495.5%	1,227,870	\$106,431	\$681,480	55.50%	\$1,176,834	\$114,438	9.72%
<b>Purchased Services</b>	726.6%	91,716	\$10,917	\$44,526	48.55%	\$60,690	\$5,387	8.88%
<b>Operating Supplies</b>	2116.3%	68,955	\$5,217	\$61,504	89.19%	\$53,316	\$2,775	5.21%
<b>Credit for Services</b>	1976.6%	(100,000)	(\$3,414)	(\$52,523)	52.52%	(\$128,799)	(\$2,529)	1.96%
<b>Total Operating Costs</b>	588.1%	3,433,036	\$285,734	\$1,970,638	57.40%	\$3,521,281	\$286,378	8.13%
<b>INCOME (LOSS) FROM OPERATIONS</b>	101.2%	(447,866)	\$38,354	\$172,293		\$111,078	\$85,624	77.08%
<b>EQUIPMENT</b>		200,000	\$2,153	\$2,153	1.08%	\$138,218	\$89,217	64.55%
<b>RESERVE FOOD SERVICE SURPLUS</b>	-41.9%		\$278,351	\$278,351		\$108,211	\$479,182	442.82%

**Parkway School District  
Building Location Recap Report**

Fiscal Year 2019 Through Period 7    Run Date: 02-12-2019 @ 14:40:39

	<b>Budget</b>	<b>Expended</b>	<b>Encumbrances</b>	<b>Unexpended</b>
FERN RIDGE HIGH	16,400.00	15,684.28	1,277.05	-561.33
CENTRAL HIGH	364,381.00	163,697.19	37,372.84	163,310.97
NORTH HIGH	288,008.00	152,250.37	13,515.44	122,242.19
WEST HIGH	338,231.00	199,996.39	46,103.61	92,131.00
SOUTH HIGH	478,348.00	222,996.16	47,101.77	208,250.07
SOUTHWEST MIDDLE	119,372.00	84,222.91	4,826.59	30,322.50
CENTRAL MIDDLE	192,990.00	106,322.73	26,342.50	60,324.77
NORTHEAST MIDDLE	170,385.00	137,287.75	2,432.78	30,664.47
SOUTH MIDDLE	134,712.00	76,053.45	12,009.49	46,649.06
WEST MIDDLE	225,907.00	162,722.77	32,495.78	30,688.45
BARRETS ELEM.	78,502.00	37,474.91	1,102.25	39,924.84
BELLERIVE ELEM.	68,316.00	39,960.05	529.17	27,826.78
CARMAN TRAILS ELEM.	83,652.00	42,471.69	6,011.13	35,169.18
CLAYMONT ELEM.	74,442.00	54,739.74	904.87	18,797.39
CRAIG ELEM.	90,326.00	67,093.83	7,740.78	15,491.39
GREEN TRAILS ELEM.	69,845.00	41,350.40	460.54	28,034.06
HANNA WOODS ELEM.	74,485.00	53,610.89	2,881.63	17,992.48
HENRY ELEM.	106,539.00	42,274.32	1,933.39	62,331.29
HIGHCROFT ELEM.	62,387.00	24,534.63	1,814.73	36,037.64
MASON RIDGE ELEM.	83,275.00	30,871.69	8,008.03	44,395.28
MCKELVEY ELEM.	109,182.00	50,922.29	3,605.57	54,654.14
OAK BROOK ELEM.	97,298.00	59,699.84	1,585.61	36,012.55
PIERREMONT ELEM.	83,195.00	44,373.92	2,692.19	36,128.89
RIVER BEND ELEM.	76,023.00	52,464.07	934.13	22,624.80
ROSS ELEM.	57,357.00	46,519.55	192.77	10,644.68
SORRENTO SPRINGS ELEM.	56,590.00	25,851.64	3,834.48	26,903.88
SHENANDOAH VALLEY ELEM.	95,971.00	62,005.43	5,120.64	28,844.93
WREN HOLLOW ELEM.	62,266.00	47,672.93	1,481.19	13,111.88
<b>Grand Total for Funds 10-12</b>	<b>3,704,131.00</b>	<b>2,115,917.49</b>	<b>245,773.54</b>	<b>1,342,439.97</b>
<b>Grand Total for Fund 20</b>	<b>0.00</b>	<b>2,049.34</b>	<b>0.00</b>	<b>-2,049.34</b>
<b>Grand Total for Fund 30</b>	<b>0.00</b>	<b>0.00</b>	<b>0.00</b>	<b>0.00</b>
<b>Grand Total for Funds 40-41</b>	<b>54,254.00</b>	<b>27,158.99</b>	<b>28,537.41</b>	<b>-1,442.40</b>
<b>Grand Total All</b>	<b>3,758,385.00</b>	<b>2,145,125.82</b>	<b>274,310.95</b>	<b>1,338,948.23</b>

**Parkway School District  
Consolidated Budget - Programs Recap Report**

Fiscal Year 2019 Through Period 7    Run Date: 02-12-2019 @ 14:41:52

	<b>Budget</b>	<b>Expended</b>	<b>Encumbrances</b>	<b>Unexpended</b>
<b>SPECIAL READING</b>	17,871.00	9,781.70	1,425.75	6,663.55
<b>COMM ARTS</b>	202,510.00	104,171.97	3,178.50	95,159.53
<b>MATHEMATICS</b>	92,242.00	42,366.06	1,122.38	48,753.56
<b>FINE ARTS</b>	393,345.00	217,437.08	18,356.70	157,551.22
<b>PHYSICAL EDUCATION</b>	64,811.00	40,118.26	3,075.72	21,617.02
<b>SCIENCE</b>	130,491.00	58,032.29	2,497.96	69,960.75
<b>SOCIAL STUDIES</b>	108,715.00	67,936.33	2,481.37	38,297.30
<b>INSTRUCTIONAL TECHNOLOGY</b>	117,682.00	67,664.66	2,043.83	47,973.51
<b>GUIDANCE</b>	31,006.00	8,531.86	0.00	22,474.14
<b>ART</b>	147,208.00	101,348.07	18,837.21	27,022.72
<b>BLDG ADMIN SERVICES</b>	2,226,800.00	1,026,854.08	111,779.95	1,088,165.97
<b>AUDIO VISUAL SERVICES</b>	13,180.00	-1,235.48	-207.38	14,622.86
<b>BUSINESS EDUCATION</b>	48,677.00	16,138.34	0.00	32,538.66
<b>MODERN CLASSICAL LANG</b>	45,883.00	16,626.37	98.15	29,158.48
<b>FAMILY AND CONSUMER SC</b>	74,474.00	31,974.81	13,776.00	28,723.19
<b>INDUSTRIAL ARTS</b>	46,193.00	19,176.27	4,104.16	22,912.57
<b>STUDENT BODY ACT</b>	242,204.00	115,577.96	46,075.29	80,550.75
<b>DRIVERS EDUCATION</b>	920.00	105.88	0.00	814.12
<b>COOP VOC ED</b>	82,760.00	17,614.68	1,966.81	63,178.51
<b>UNIFIED STUDIES</b>	2,580.00	2,873.38	0.00	-293.38
<b>SPEECH</b>	28,911.00	11,052.47	0.00	17,858.53
<b>LIBRARY SVCS</b>	94,820.00	41,942.90	2,293.79	50,583.31
<b>HEALTH ED</b>	8,483.00	2,499.44	0.00	5,983.56
<b>EEE CAMP</b>	123,917.00	27,787.79	58,188.00	37,941.21
<b>GIFTED EDUCATION</b>	218,386.00	122,987.44	456.00	94,942.56
<b>DRUG FREE SCHOOL</b>	133,408.48	67,125.20	610.80	65,672.48
<b>ADC</b>	619,443.00	375,551.80	323.97	243,567.23
<b>SUMMER SCHOOL</b>	1,519,475.00	118,950.28	4,341.45	1,396,183.27
<b>INSTRUCTIONAL STAFFING</b>	134,616,254.86	66,747,896.20	0.00	67,868,358.66
<b>BLDG LEVEL STAFFING</b>	17,196,851.00	9,485,175.74	0.00	7,711,675.26
<b>SPECIAL SERVICES</b>	505,018.00	216,319.94	0.00	288,698.06
<b>ESOL</b>	17,778.00	7,310.18	492.80	9,975.02
<b>ATHLETICS</b>	1,009,781.00	555,594.33	127,478.65	326,708.02
<b>ADULT BASIC EDUCATION</b>	1,684,775.00	811,541.49	27,659.69	845,573.82
<b>SWIM CLUB</b>	850,596.00	410,713.20	35,028.50	404,854.30
<b>EARLY CHILDHOOD</b>	1,714,276.00	925,493.23	4,114.69	784,668.08
<b>PRESCHOOLS</b>	2,138,430.00	1,237,330.61	7.25	901,092.14
<b>PARK ROCK COMM ED</b>	105,000.00	17,960.14	0.00	87,039.86

**Parkway School District  
Consolidated Budget - Programs Recap Report**

Fiscal Year 2019 Through Period 7    Run Date: 02-12-2019 @ 14:41:52

	Budget	Expended	Encumbrances	Unexpended
STUDENT SERVICES	129,295.00	115,044.27	40,980.40	-26,729.67
PUPIL PERSONNEL	2,042,806.00	1,405,575.13	123,015.91	514,214.96
HEALTH SERVICES	2,755,148.00	1,481,108.63	3,233.69	1,270,805.68
GUIDANCE AND COUNSELING	205,717.00	122,445.31	0.00	83,271.69
SEB SUPPORT	11,100.00	2,627.66	191.48	8,280.86
TEACH LEARN ACCOUNTABILITY	4,627,098.00	1,986,805.07	207,161.64	2,433,131.29
PROFESSIONAL LEARNING	1,349,713.00	577,698.72	12,079.63	759,934.65
READING DIAGNOSTICS	204,345.75	86,995.67	0.00	117,350.08
EVALUATION	267,638.00	148,635.20	553.66	118,449.14
INSTRUC TECH LIBRARY MEDIA	952,836.00	615,334.66	53,545.76	283,955.58
STUDENT ASSESSMENT	409,367.00	106,813.44	48,433.00	254,120.56
PROGRESS MONITORING	817,164.00	273,494.53	0.00	543,669.47
BOARD OF EDUCATION	192,455.00	136,668.36	0.00	55,786.64
SUPERINTENDENT	481,887.00	260,296.33	0.00	221,590.67
DISTRICT DUES	154,100.00	99,495.23	40,808.22	13,796.55
LEGAL SERVICES	200,000.00	69,914.91	131,805.91	-1,720.82
DEPUTY SUPERINTENDENT	347,512.00	166,148.11	552.40	180,811.49
ASST SUPER OF STUDENT SERVICES	324,513.00	164,997.74	0.00	159,515.26
CHIEF FINANCIAL OFFICER	312,444.00	174,873.79	361.78	137,208.43
COMMUNICATIONS	953,952.00	596,827.38	6,072.76	351,051.86
SAFETY SECURITY	1,368,648.00	706,380.75	398,453.66	263,813.59
SPECIAL PROJECTS	167,907.00	52,288.32	0.00	115,618.68
FINANCE	1,011,363.00	608,406.90	6,787.91	396,168.19
INTERNAL EQUIP FIN	456,360.00	329,539.30	133,774.10	-6,953.40
RISK MGMT	2,261,532.00	2,036,244.82	47,954.63	177,332.55
FOOD SERVICES	6,872,016.00	3,648,534.28	1,134,782.43	2,088,699.29
PURCHASING	395,962.00	221,197.25	457.12	174,307.63
PRINT SHOP	28,336.00	-5,110.57	4,408.82	29,037.75
SCHOOL STORES	440,123.00	207,904.04	108,221.72	123,997.24
WAREHOUSE	1,228,140.00	529,959.54	2,037.24	696,143.22
MAILROOM	94,053.00	42,028.60	1,541.29	50,483.11
TECHNOLOGY	7,243,781.00	4,638,325.14	186,345.08	2,419,110.78
HUMAN RESOURCES	1,143,585.00	625,983.07	9,085.19	508,516.74
TRANSPORTATION	6,918,901.00	4,311,070.73	130,232.74	2,477,597.53
SSD TRANSPORTATION	2,782,606.00	1,199,313.96	0.00	1,583,292.04
FACILITY OPERATIONS	8,198,278.00	4,292,014.44	100,648.98	3,805,614.58
FACILITY MAINTENANCE	5,209,547.00	2,646,947.01	396,187.29	2,166,412.70
GROUNDS MAINTENANCE	1,991,323.00	1,000,117.89	213,478.74	777,726.37



**Parkway School District  
Consolidated Budget - Programs Recap Report**

Fiscal Year 2019 Through Period 7    Run Date: 02-12-2019 @ 14:41:52

	<b>Budget</b>	<b>Expended</b>	<b>Encumbrances</b>	<b>Unexpended</b>
<b>PLANNING</b>	1,419,370.48	503,995.84	148,445.04	766,929.60
<b>ENVIRONMENTAL SVCS</b>	747,447.00	450,655.24	92,050.03	204,741.73
<b>FACILITY MANAGEMENT</b>	920,866.00	420,865.47	27,053.21	472,947.32
<b>SUSTAINABILITY</b>	5,325,222.00	2,539,235.44	1,350,293.86	1,435,692.70
<b>REBATE PROJECTS</b>	329,946.00	-259,952.58	18,256.00	571,642.58
<b>2014 BOND</b>	22,496,421.00	12,800,894.38	3,054,395.25	6,641,131.37
<b>2018 BOND</b>	0.00	0.00	17,158.51	-17,158.51
<b>DEBT SERVICE</b>	25,450,648.00	3,464,181.52	3,311.00	21,983,155.48
<b>STATE GRANTS</b>	372,071.50	102,934.40	0.00	269,137.10
<b>FEDERAL GRANTS</b>	2,513,148.00	1,072,368.64	20,169.57	1,420,609.79
<b>LOCAL GRANTS</b>	121,835.11	89,571.03	6,750.00	25,514.08
<b>Grand Total for Funds 10-12</b>	<b>85,152,564.59</b>	<b>45,562,359.01</b>	<b>5,303,190.00</b>	<b>34,287,015.58</b>
<b>Grand Total for Fund 20</b>	<b>154,200,715.59</b>	<b>76,526,645.34</b>	<b>0.00</b>	<b>77,674,070.25</b>
<b>Grand Total for Fund 30</b>	<b>25,450,648.00</b>	<b>3,464,181.52</b>	<b>3,311.00</b>	<b>21,983,155.48</b>
<b>Grand Total for Funds 40-41</b>	<b>26,119,754.00</b>	<b>14,460,836.07</b>	<b>3,449,024.13</b>	<b>8,192,735.29</b>
<b>Grand Total All</b>	<b>290,923,682.18</b>	<b>140,014,021.94</b>	<b>8,772,683.64</b>	<b>142,136,976.6</b> n

• **GLOSSARY**

ACCOUNTS PAYABLE - Unpaid amounts currently owed to vendors for goods and services provided.

ACCOUNTS RECEIVABLE - Revenues earned but not yet received by the District.

AMOUNT PROVIDED FOR BOND PRINCIPAL - Amount available to meet current and future bond payments.

AMOUNT TO BE PROVIDED FOR PRINCIPAL AND INTEREST - The amount of funds needed to repay remaining bonded indebtedness. This is a “memo type” entry and does not represent an actual accumulation of cash.

BONDS AND INTEREST PAYABLE - CURRENT - Amount of bond principal and interest payable in future years.

CONSTRUCTION IN PROGRESS - Amounts expended to date on construction projects not completed. When completed, this account is reduced by the total cost of the completed projects.

ENCUMBRANCES - Obligations in the form of purchase orders, contracts, salary commitments, etc. for which a budgeted appropriation has been made.

EQUITY IN GENERAL FIXED ASSETS - Represents the appropriation of funds over a number of years to acquire land, buildings / improvements, and equipment. It is an offset to the respective asset accounts.

FUND BALANCE - The excess of assets over liabilities, which represent the “net worth” of a fund.

FUNDS - The four basic funds and their purposes are:

Capital Projects (Building) - Only capital equipment and building additions / alterations can be charged to this fund. Primary sources of revenue are property / delinquent taxes, building leases, investment income and sale of bonds.

Debt Service - Bond principal, interest and fees associated with the issue and redemption of bonds are the only expenses chargeable to this fund. Primary sources of revenue are property / delinquent taxes and investment income.

General (Incidental) - Expenses not specifically chargeable to other funds are charged to this fund. Primary sources of revenue are property / delinquent taxes, sales tax, investment income, minimum guarantee, VST, textbook, transportation and food service.

Special Revenue (Teachers) - Only salaries for certificated personnel and the cost medical / dental / vision / life insurance can be charged to this fund. Primary sources of revenue are property / delinquent taxes, investment income, state utility tax, minimum guarantee and VST.

INVENTORIES - Value of consumables purchased for future use.

PREPAID EXPENSES - Services paid for in advance of use (e.g. insurance).

RESERVE - Portion of the fund balance which is segregated for a future use and, therefore, not available for future appropriation.

RESERVE FOR BUDGETED ENCUMBRANCE - Funds budgeted and encumbered but not yet spent.

RESTRICTED RESERVE - Balances in the General Fund or Capital Projects Fund restricted as to the use (e.g. future medical / dental benefits) or unspent bond issue funds.

UNREALIZED REVENUES - Revenues budgeted but not yet realized.

UNSPENT BUDGETED FUNDS - Funds budgeted but not expended or encumbered.



## FOR MONTH OF: JANUARY - FY19

Attached is a list (alphabetical by vendor) of purchase orders and order for payments \$500 to \$15,000 and \$15,000 + which the administration has approved in accordance with Policy #DJEBP

Reports per DIC.BP

c: Patty Bedborough, Brian Whittle, Erik Lueders

ORDER FOR PAYMENT

\$500 - \$15,000

JANUARY - FY19

VENDOR NAME	DOCUMENT	INVOICE	WARRANT	OBJECT	CHECK NO	AMOUNT
AC SYSTEMS, INC	344396	58488	REG	6411	485819	\$ 501.50
AMER AIRLINES INC.	346965	19011625020	EARLY	6343	486552	\$ 1,001.16
BARROW, MARIANNE	346991	PART B REIM	REG	6241	486319	\$ 1,608.00
BATTERIES PLUS BULBS	343667	P9241790	REG	6411	485425	\$ 935.00
BAUGUS, MICHAEL	343981	121218 TVL	REG	6343	485829	\$ 568.93
CITY OF BALLWIN	344106	37	EARLY	6362	485234	\$ 500.00
CREVE COEUR-OLIVETTE	343132	5161	EARLY	6371	485237	\$ 530.00
DAC INDUSTRIES	342964	209U-PKWY STEP TEAM	EARLY	6411	485239	\$ 752.40
FRICK, DEBORAH	346343	MED REFUND	REG	6241	486105	\$ 938.00
FROST ELECTRIC SUPPL	345184	S3983766.001	REG	6411	485860	\$ 729.60
GATEWAY STRINGS	346651	750	REG	6411	486348	\$ 562.60
GIFTED RESOURCE COUN	344099	132019	EARLY	6411	485705	\$ 504.00
H C SHARP COMPANY	345189	18121822	REG	6411	485870	\$ 855.64
HACKMAN	347815	01/29/19	LEGAL	6317	486183	\$ 4,518.91
LEVERENZ, FRANCES	344250	MEDICARE PART B	EARLY	6241	485269	\$ 1,356.00
LOEFFLER	347818	1/29/19	LEGAL	6317	486184	\$ 4,520.98
MAENDER, CAROLYN	344391	PART B REIMBURSE	EARLY	6241	485272	\$ 938.00
MILLER, GRACE	346413	MEDICARE PART B	EARLY	6241	486004	\$ 1,312.50
MILLER, ZOE NOELLE	345855	1	REG	6312	486376	\$ 940.00
MISSOURI VALLEY CON	347039	10106	EARLY	6398	486601	\$ 826.00
ML SOUND LLC	344054	1064	REG	6391	485904	\$ 750.32
MO PETROLEUM PRODUC	346992	42846	013119	6411	3288	\$ 878.24
NIEBURG, FRANCINE	342941	PART B REIMBURSE	EARLY	6241	485317	\$ 938.00
NOBLE, KYLE	344949	FBALL NOBLE 12-4-18	REG	6391	485909	\$ 500.00
PERRY, ZENOBIA	345428	1155	REG	6391	486151	\$ 708.75
PHEGLEY	347819	1/29/19	LEGAL	6317	486187	\$ 3,349.79
PJ PRINTING	342997	10121938	REG	6411	485617	\$ 780.00
ROBBINS, MARY	342983	MROBBINS10219	REG	6391	485627	\$ 500.00
SCHMIDT	347820	1/29/19	LEGAL	6317	486186	\$ 3,498.91
SHIRTS ANYTIME	346289	190107	REG	6411	486161	\$ 583.00
SIGLER, IDA	347772	MEDICARE PART B REF.	EARLY	6241	486287	\$ 1,392.00
SILVERIO, PAMELA	343795	PART B MEDICARE REF.	EARLY	6241	485370	\$ 896.00
SPITZER, DEBORAH	343156	REF. MEDICARE PART B	EARLY	6241	485374	\$ 1,608.00
SPORTS SCHEDULING SR	344850	1623	EARLY	6319	485794	\$ 830.00
ST. LOUIS SPORTSWEAR	345224	53023	REG	6411	486166	\$ 609.00
START 2 SEW	346236	1400	REG	6411	486168	\$ 962.79
TED DREWES	345181	68748	REG	6411	486171	\$ 618.80
TENNESSE THEATRE COM	344309	SLM-20017	EARLY	6411	485802	\$ 688.00
UNIVERSAL CREATIVE C	343812	46186	REG	6411	485658	\$ 720.90
VIRTUAL ENTERPRISES	346978	YBS19-238	EARLY	6411	486306	\$ 800.00
VIVIANO'S CHESTERFIE	343783	1014824	REG	6411	485661	\$ 734.96
WE SEW ALONG REPAIR	343805	112418	REG	6332	485666	\$ 945.00
					<b>TOTAL:</b>	<b>\$ 47,691.68</b>

## PURCHASE ORDERS

\$500 - \$15,000

January FY 19

PO#	Vendor Name	PO Date	Order Amount	Balance	Status	1st GL Account
58190199	AALCO MANUFACTU	01/23/2019	\$ 3,450.00	\$ 3,450.00	8 - Printed	41149860-6541-07280
48190200	ADVANCED ELEVAT	01/16/2019	\$ 2,000.00	\$ 2,000.00	8 - Printed	40406147-6521-00049
62190338	ALL STAR DISTRI	01/10/2019	\$ 629.00	\$ 629.00	8 - Printed	10221491-6411
50190121	ALUMINUM ATHLET	01/18/2019	\$ 920.00	\$ 920.00	8 - Printed	10141230-6411
62190364	AMAZON	01/23/2019	\$ 964.92	\$ 964.92	8 - Printed	10111169-6411 *
74190010	AMAZON	01/28/2019	\$ 3,499.00	\$ 3,499.00	8 - Printed	10223246-6411
68190010	AMP UP ENTERTAI	01/23/2019	\$ 1,950.00	\$ -	0 - Closed	10398220-6339-03105
63190254	AOS-ALEXANDER O	01/18/2019	\$ 1,140.00	\$ -	0 - Closed	10235010-6316
63190261	APPLE INC.	01/25/2019	\$ 868.00	\$ 868.00	8 - Printed	10111AHZ-6412
63190266	APPLE INC.	01/30/2019	\$ 1,829.00	\$ 1,829.00	8 - Printed	40234560-6543
58190190	ARROWHEAD ATHLE	01/18/2019	\$ 535.05	\$ 535.05	8 - Printed	11149365-6411-09324
63190252	ASSETGENIE, INC	01/18/2019	\$ 837.50	\$ -	0 - Closed	10-1617
63190263	ASSETGENIE, INC	01/28/2019	\$ 14,628.75	\$ 2,983.50	8 - Printed	10-1617
58190192	BANDEMER MARKET	01/18/2019	\$ 10,000.00	\$ 10,000.00	8 - Printed	11149365-6411-09755
85190310	BENTLEY SYSTEMS	01/23/2019	\$ 4,056.00	\$ 4,056.00	8 - Printed	10255AJN-6412
56190166	BEYERS LUMBER C	01/18/2019	\$ 506.38	\$ 506.38	8 - Printed	10131273-6411
58190178	BIO RAD LABORAT	01/07/2019	\$ 2,906.41	\$ -	0 - Closed	10111BR0-6411
85190302	BIRKEL ELECTRIC	01/14/2019	\$ 3,806.00	\$ 3,806.00	8 - Printed	41399020-6542-08829
58190175	BLICK ART MATER	01/02/2019	\$ 796.55	\$ -	0 - Closed	10111BRN-6411
58190182	BLICK ART MATER	01/09/2019	\$ 1,313.91	\$ -	0 - Closed	10111BRN-6411
48190197	BOND ARCHITECTS	01/09/2019	\$ 2,625.00	\$ 1,809.68	8 - Printed	40406120-6521-00079
85190298	BOND ARCHITECTS	01/09/2019	\$ 13,815.72	\$ 13,815.72	8 - Printed	40255044-6521-00791
18190021	BRAINPOP	01/23/2019	\$ 1,550.00	\$ -	0 - Closed	10111AJG-6412
97190106	BRANDT & SONS A	01/16/2019	\$ 3,500.00	\$ 3,500.00	8 - Printed	10051440-6411
58190183	BRIAR STREET TH	01/09/2019	\$ 2,510.00	\$ -	0 - Closed	11149381-6398-08464
48190196	BROCK HOLDINGS	01/09/2019	\$ 6,821.97	\$ -	0 - Closed	40406147-6521-00049
85190309	BUILDING SYSTEM	01/23/2019	\$ 5,265.12	\$ -	0 - Closed	10255AJN-6412
58190181	CASUAL TEES	01/09/2019	\$ 507.50	\$ -	0 - Closed	11149365-6411-08368
58190174	CASUAL TEES	01/02/2019	\$ 509.50	\$ -	0 - Closed	11149365-6411-09312
58190191	CASUAL TEES	01/18/2019	\$ 612.00	\$ -	0 - Closed	11149365-6411-08220
50190117	CASUAL TEES	01/09/2019	\$ 679.16	\$ -	0 - Closed	11149308-6411-07696
56190165	CASUAL TEES	01/18/2019	\$ 801.00	\$ -	0 - Closed	11149342-6411-09832
63190242	CDW-G	01/09/2019	\$ 569.47	\$ -	0 - Closed	10052380-6412
63190238	CDW-G	01/03/2019	\$ 1,051.08	\$ -	0 - Closed	10235330-6412
63190247	CDW-G	01/14/2019	\$ 1,270.32	\$ -	0 - Closed	10235330-6412
48190204	CI SELECT	01/23/2019	\$ 6,725.00	\$ 6,725.00	8 - Printed	48406060-6521-00084
92190016	COABE 2008	01/25/2019	\$ 3,493.00	\$ 3,493.00	8 - Printed	10162540-6343-02001
97190115	COMMON CENTS RE	01/25/2019	\$ 4,850.00	\$ -	0 - Closed	40005790-6541
63190240	COMPUTER INFORM	01/07/2019	\$ 750.00	\$ -	0 - Closed	10235020-6316
50190119	CORPORATE SEASO	01/10/2019	\$ 1,612.50	\$ -	0 - Closed	11149309-6411-07376
97190105	CREST INDUSTRIE	01/16/2019	\$ 2,000.00	\$ 1,475.54	8 - Printed	10051410-6411
97190102	CUMMINS MID-SOU	01/16/2019	\$ 2,000.00	\$ 371.02	8 - Printed	10051410-6411
97190103	D & L TOWING	01/16/2019	\$ 1,750.00	\$ 1,321.00	8 - Printed	10255233-6391
58190197	DAKTRONICS INC	01/23/2019	\$ 2,515.00	\$ 2,515.00	8 - Printed	102410CS-6332
58190180	DALE SIGN SERVI	01/09/2019	\$ 1,428.00	\$ 1,428.00	8 - Printed	11149365-6411-07200

PO#	Vendor Name	PO Date	Order Amount	Balance	Status	1st GL Account
45190016	DEMCO INC	01/02/2019	\$ 714.90	\$ 714.90	8 - Printed	10221112-6411
58190172	DESIGNS FOR DAN	01/02/2019	\$ 1,983.35	\$ -	0 - Closed	11149365-6411-08155
58190177	DESIGNS FOR DAN	01/07/2019	\$ 2,107.10	\$ 2,107.10	8 - Printed	11149365-6411-08155
97190120	DIERBERGS MARKE	01/28/2019	\$ 800.00	\$ 732.05	8 - Printed	11149039-6411-09208
58190188	DIERBERGS MARKE	01/10/2019	\$ 3,500.00	\$ 2,310.90	8 - Printed	10131296-6411
40190029	DRAPERIES BY MO	01/25/2019	\$ 968.00	\$ 968.00	8 - Printed	10241876-6411
85190307	ENERGY PETROLEU	01/18/2019	\$ 3,487.85	\$ -	0 - Closed	10255AJS-6486
85190301	ENERGY PETROLEU	01/14/2019	\$ 3,602.96	\$ -	0 - Closed	10255AJS-6486
97190104	ENERGY PETROLEU	01/16/2019	\$ 12,535.05	\$ -	0 - Closed	10051380-6486
46190046	FEHLIG BROTHERS	01/25/2019	\$ 1,460.21	\$ -	0 - Closed	10131193-6411
41190027	FIRST EVANGELIC	01/30/2019	\$ 1,240.00	\$ 1,240.00	8 - Printed	11149272-6339-07992
97190116	FIRST STUDENT	01/25/2019	\$ 10,000.00	\$ 7,223.20	8 - Printed	10255160-6342
50190123	FITNESS UPHOLST	01/23/2019	\$ 715.00	\$ 715.00	8 - Printed	10111493-6332
56190171	FOLLETT SCHOOL	01/23/2019	\$ 670.00	\$ 670.00	8 - Printed	10111BNE-6431
83190092	FOLLETT SCHOOL	01/10/2019	\$ 765.37	\$ 765.37	8 - Printed	10223820-6441
62190344	FOLLETT SCHOOL	01/23/2019	\$ 811.75	\$ 811.75	8 - Printed	10113168-6431
83190087	FOLLETT SCHOOL	01/08/2019	\$ 1,223.26	\$ -	0 - Closed	10223165-6412
62190374	FOLLETT SCHOOL	01/25/2019	\$ 1,330.16	\$ 1,330.16	8 - Printed	10113168-6431
83190097	FOLLETT SCHOOL	01/23/2019	\$ 1,620.03	\$ 1,620.03	8 - Printed	10223880-6441
83190101	FOLLETT SCHOOL	01/25/2019	\$ 1,644.45	\$ 1,644.45	8 - Printed	10223900-6441
83190091	FOLLETT SCHOOL	01/10/2019	\$ 2,019.64	\$ 2,019.64	8 - Printed	10223750-6441
62190375	FOLLETT SCHOOL	01/25/2019	\$ 2,151.80	\$ 2,151.80	8 - Printed	10113168-6431
83190090	FOLLETT SCHOOL	01/10/2019	\$ 2,280.68	\$ 2,280.68	8 - Printed	10223670-6441
83190093	FOLLETT SCHOOL	01/23/2019	\$ 2,623.45	\$ 2,623.45	8 - Printed	10223830-6441
83190089	FOLLETT SCHOOL	01/10/2019	\$ 2,965.10	\$ 2,965.10	8 - Printed	10223700-6441
83190096	FOLLETT SCHOOL	01/23/2019	\$ 3,556.12	\$ 3,556.12	8 - Printed	10223840-6441
83190100	FOLLETT SCHOOL	01/25/2019	\$ 5,504.08	\$ 5,504.08	8 - Printed	10223890-6441
83190095	FOLLETT SCHOOL	01/23/2019	\$ 5,720.96	\$ 5,720.96	8 - Printed	10223800-6441
85190297	FOUNDATION BUIL	01/09/2019	\$ 4,000.00	\$ 4,000.00	8 - Printed	102550DU-6411
20190061	FRANKLIN COVEY	01/23/2019	\$ 1,603.37	\$ 1,603.37	8 - Printed	10241798-6411
62190382	GLOBALHACK, INS	01/28/2019	\$ 500.00	\$ 500.00	8 - Printed	10113522-6398
45190018	GOPHER SPORT	01/18/2019	\$ 1,099.75	\$ -	0 - Closed	10111AZM-6411
43190044	GRAINGER - BATT	01/03/2019	\$ 500.00	\$ 478.57	8 - Printed	10111AXA-6411
82190029	GRAINGER - BATT	01/23/2019	\$ 500.00	\$ 447.14	8 - Printed	10255AFK-6411
62190341	GUITAR CENTER	01/23/2019	\$ 729.87	\$ 729.87	8 - Printed	10113085-6411
62190330	GUITAR CENTER	01/08/2019	\$ 3,038.00	\$ 3,038.00	8 - Printed	40113030-6542
62190343	GUITAR CENTER	01/23/2019	\$ 3,428.25	\$ 3,428.25	8 - Printed	10113086-6411
85190311	HEAVY DUTY EQUI	01/23/2019	\$ 3,399.00	\$ 3,399.00	8 - Printed	40255120-6541
45190017	HERFF JONES INC	01/18/2019	\$ 5,160.65	\$ 5,160.65	8 - Printed	11149288-6411-09872
56190178	HERFF JONES INC	01/30/2019	\$ 13,580.38	\$ 13,580.38	8 - Printed	11149342-6411-08952
63190259	HEWLETT-PACKARD	01/23/2019	\$ 2,286.48	\$ 2,286.48	8 - Printed	10162014-6412-02001
63190243	HEWLETT-PACKARD	01/09/2019	\$ 5,591.72	\$ 5,591.72	8 - Printed	10255AJQ-6412
18190019	INTER-STATE STU	01/09/2019	\$ 1,500.00	\$ 1,500.00	8 - Printed	11149224-6411-09872
54190163	JEFFCO TRAVEL S	01/25/2019	\$ 10,297.00	\$ 7,297.00	8 - Printed	11149322-6398-07830
56190177	JEFFCO TRAVEL S	01/30/2019	\$ 10,530.00	\$ 10,530.00	8 - Printed	10213790-6398 *
62190370	JOHN WILEY & SO	01/23/2019	\$ 1,730.00	\$ 1,730.00	8 - Printed	10113115-6431
54190164	JOSTENS INC	01/30/2019	\$ 7,400.00	\$ 7,400.00	8 - Printed	11149321-6411-08048
56190161	KAEMMERLEN PART	01/14/2019	\$ 913.95	\$ 913.95	8 - Printed	10131264-6332
85190305	KANSAS CITY AUD	01/16/2019	\$ 8,900.00	\$ 8,900.00	8 - Printed	41399020-6542-08829

PO#	Vendor Name	PO Date	Order Amount	Balance	Status	1st GL Account
73190072	KELLY PRESS	01/03/2019	\$ 750.00	\$ -	0 - Closed	11149156-6411-08363
73190078	KELLY PRESS	01/14/2019	\$ 3,000.00	\$ -	0 - Closed	11149156-6411-08363
73190077	KELLY PRESS	01/14/2019	\$ 6,000.00	\$ -	0 - Closed	11149156-6411-08363
62190377	LACEFIELD MUSIC	01/25/2019	\$ 4,101.00	\$ 4,101.00	8 - Printed	40113650-6542
23190038	LEGO BRAND RETA	01/10/2019	\$ 1,647.80	\$ 1,647.80	8 - Printed	11149249-6411-08332
5190031	LEGO BRAND RETA	01/18/2019	\$ 1,829.70	\$ 1,829.70	8 - Printed	11149110-6411-07992
56190168	LOGAN UNIVERSIT	01/18/2019	\$ 1,250.00	\$ 650.00	8 - Printed	11149339-6339-08436
97190108	LOWE AUTOMOTIVE	01/16/2019	\$ 14,500.00	\$ 9,158.51	8 - Printed	10051410-6411
50190124	MASTER PRODUCTI	01/23/2019	\$ 1,998.00	\$ 1,998.00	8 - Printed	11149307-6391-08808
97190118	MIDWEST BUS SAL	01/25/2019	\$ 14,750.00	\$ 9,335.74	8 - Printed	10051410-6411
79190010	MO ACREDITATION	01/09/2019	\$ 1,450.00	\$ -	0 - Closed	10352300-6411-04500
97190109	MO UST INSURANC	01/16/2019	\$ 625.00	\$ -	0 - Closed	10255692-6351
85190306	MORTON SALT, IN	01/16/2019	\$ 12,000.00	\$ 12,000.00	8 - Printed	10255AIO-6411
19190041	MOZINGO MUSIC	01/10/2019	\$ 1,347.00	\$ -	0 - Closed	10-2150
85190303	NATIONAL PLAYGR	01/14/2019	\$ 13,969.00	\$ 13,969.00	8 - Printed	41399010-6541-08829
74190009	NATL BOARD/PROF	01/23/2019	\$ 950.00	\$ -	0 - Closed	10223081-6319
63190256	NORTHSTAR AV	01/18/2019	\$ 7,280.00	\$ -	0 - Closed	10235410-6412
62190367	NSTA	01/23/2019	\$ 1,441.00	\$ 1,441.00	8 - Printed	10223079-6319
62190368	NSTA	01/23/2019	\$ 1,441.00	\$ 1,441.00	8 - Printed	10223078-6319
62190366	NSTA	01/23/2019	\$ 1,476.00	\$ 1,476.00	8 - Printed	10223078-6319
92190017	OAKWOOD SYSTEMS	01/25/2019	\$ 3,000.00	\$ 3,000.00	8 - Printed	10162710-6412-02000
62190379	ODAY, ELIZA	01/25/2019	\$ 700.00	\$ -	0 - Closed	10228098-6312-02115
17190035	OFFICE ESSENTIA	01/25/2019	\$ 500.00	\$ 318.84	8 - Printed	10241636-6411
62190333	OFFICE ESSENTIA	01/08/2019	\$ 500.00	\$ 224.47	8 - Printed	10391090-6411
17190034	OFFICE ESSENTIA	01/16/2019	\$ 685.93	\$ 685.93	8 - Printed	10111AIA-6411
43190046	OFFICE ESSENTIA	01/14/2019	\$ 938.90	\$ 938.90	8 - Printed	10241924-6411
23190037	OFFICE ESSENTIA	01/09/2019	\$ 1,000.00	\$ 888.12	8 - Printed	10111AQT-6411
50190120	OFFICE ESSENTIA	01/10/2019	\$ 1,542.65	\$ 1,542.65	8 - Printed	1024100K-6411
58190193	OFFICE ESSENTIA	01/18/2019	\$ 4,000.00	\$ 3,423.93	8 - Printed	102410DE-6411
82190028	OFFICE ESSENTIA	01/09/2019	\$ 5,000.00	\$ 5,000.00	8 - Printed	10255AEF-6411
74190011	ORANGESCAPE INC	01/28/2019	\$ 3,060.00	\$ -	0 - Closed	10223247-6412
2190068	OUR LITTLE HAVE	01/23/2019	\$ 638.93	\$ -	0 - Closed	11149070-6411-07992
83190088	OVERDRIVE INC.	01/08/2019	\$ 2,000.00	\$ -	0 - Closed	10223827-6412
62190340	PALOS SPORTS	01/10/2019	\$ 3,324.43	\$ 3,324.43	8 - Printed	40113001-6542
62190380	PAM HARRIS CONS	01/25/2019	\$ 2,650.00	\$ -	0 - Closed	10228098-6312-02115
62190337	PATTI DEWITT IN	01/08/2019	\$ 600.00	\$ -	0 - Closed	10111BUE-6431
50190115	PAXTON/PATTERSO	01/07/2019	\$ 525.27	\$ -	0 - Closed	10131213-6411
68190009	PEARSON	01/08/2019	\$ 766.03	\$ -	0 - Closed	10121330-6411
48190202	PROFESSIONAL SE	01/18/2019	\$ 4,057.00	\$ 4,057.00	8 - Printed	48406070-6521-00084
48190201	PROFESSIONAL SE	01/16/2019	\$ 4,427.00	\$ 4,427.00	8 - Printed	40406166-6521-00077
48190198	PROFESSIONAL SE	01/14/2019	\$ 4,519.00	\$ 3,503.70	8 - Printed	40406174-6521-00078
48190205	PROFESSIONAL SE	01/28/2019	\$ 8,845.00	\$ 8,845.00	8 - Printed	40406130-6530-00064
97190107	PUNDMANN FORD	01/16/2019	\$ 2,500.00	\$ 137.11	8 - Printed	10051410-6411
50190113	RONNOCO COFFEE	01/02/2019	\$ 1,000.00	\$ 1,000.00	8 - Printed	11149308-6411-07562
97190112	RUSH TRUCK CENT	01/16/2019	\$ 14,500.00	\$ 1,217.63	8 - Printed	10051410-6411
62190335	SAINT LOUIS TRA	01/08/2019	\$ 900.00	\$ -	0 - Closed	10251116-6342
9190046	SAM'S CLUB DIRE	01/10/2019	\$ 800.00	\$ 764.06	8 - Printed	11149187-6411-07992
58190200	SCHALLER HARDWO	01/23/2019	\$ 600.00	\$ -	0 - Closed	10131302-6411
50190111	SCHILLER'S IMAG	01/02/2019	\$ 2,000.00	\$ -	0 - Closed	11149308-6411-09872



PO#	Vendor Name	PO Date	Order Amount	Balance	Status	1st GL Account
58190201	SCHILLER'S IMAG	01/25/2019	\$ 8,278.30	\$ 8,278.30	8 - Printed	11149365-6411-09872
2190065	SCHOOL SPECIALT	01/07/2019	\$ 508.02	\$ -	0 - Closed	10241250-6411
5190032	SCHOOL SPECIALT	01/23/2019	\$ 1,282.17	\$ 1,282.17	8 - Printed	10111007-6411
85190299	SITEONE LANDSCA	01/09/2019	\$ 5,000.00	\$ 5,000.00	8 - Printed	10255AIO-6411
63190265	SITY COMMUNICAT	01/28/2019	\$ 670.00	\$ 670.00	8 - Printed	10235090-6361
63190260	SITY COMMUNICAT	01/23/2019	\$ 825.00	\$ 825.00	8 - Printed	10235090-6361
63190241	SMARTSHEET INC.	01/07/2019	\$ 4,000.00	\$ -	0 - Closed	10235020-6316
62190329	SOLUTION TREE L	01/03/2019	\$ 3,300.00	\$ 3,300.00	8 - Printed	10213750-6312
18190020	ST. LOUIS CARDI	01/09/2019	\$ 5,000.00	\$ 5,000.00	8 - Printed	11149224-6411-08525
62190381	ST. LOUIS CNTY	01/25/2019	\$ 5,541.00	\$ -	0 - Closed	10111318-6339 *
63190245	STAPLES	01/09/2019	\$ 945.25	\$ -	0 - Closed	10111BEI-6412
63190258	STAPLES	01/18/2019	\$ 3,715.00	\$ -	0 - Closed	10162014-6412-02001
48190199	TARKETT USA INC	01/14/2019	\$ 6,376.51	\$ 6,376.51	8 - Printed	48406060-6521-00084
85190312	THERMAL MECHANI	01/23/2019	\$ 8,258.81	\$ 8,258.81	8 - Printed	40255025-6541
62190373	TJ'S PIZZA	01/23/2019	\$ 3,499.00	\$ -	0 - Closed	11149036-6411-09648
58190187	TKO DJ'S	01/09/2019	\$ 7,349.00	\$ -	0 - Closed	11149364-6391-08904
97190111	TRUCK CENTERS I	01/16/2019	\$ 2,344.54	\$ -	0 - Closed	10051470-6391
97190110	TRUCK CENTERS I	01/16/2019	\$ 2,751.38	\$ -	0 - Closed	10051470-6391
97190121	TRUCK CENTERS I	01/30/2019	\$ 2,751.38	\$ 2,751.38	8 - Printed	10051470-6391
97190119	TYLER TECHNOLOG	01/25/2019	\$ 1,050.00	\$ 1,050.00	8 - Printed	10051250-6316
85190304	ULINE SHIPPING	01/14/2019	\$ 1,152.00	\$ 1,152.00	8 - Printed	10255512-6411
58190184	UNITED RENTALS	01/09/2019	\$ 511.57	\$ 511.57	8 - Printed	11149364-6391-08904
45190019	USA TOURS, INC	01/18/2019	\$ 1,660.00	\$ 1,660.00	8 - Printed	11259490-6342-08016
41190026	USA TOURS, INC	01/07/2019	\$ 1,660.00	\$ 1,245.00	8 - Printed	11259450-6342-07592
58190195	USA TOURS, INC	01/18/2019	\$ 1,720.00	\$ 1,720.00	8 - Printed	11259640-6342-09184
58190176	USA TOURS, INC	01/03/2019	\$ 10,070.00	\$ 10,070.00	8 - Printed	11259640-6342-08155
62190372	VERNIER SOFTWAR	01/23/2019	\$ 1,749.52	\$ 1,749.52	8 - Printed	10113122-6411
62190339	VERNIER SOFTWAR	01/10/2019	\$ 8,037.94	\$ -	0 - Closed	10113118-6411
85190308	VILLA LIGHTING	01/18/2019	\$ 1,333.30	\$ -	0 - Closed	102550DV-6411
50190126	VIRCO MFG CORP	01/25/2019	\$ 1,722.24	\$ 1,722.24	8 - Printed	10111BEJ-6411
50190122	VS ATHLETICS	01/18/2019	\$ 682.00	\$ 682.00	8 - Printed	10141230-6411
62190336	WASHINGTON MUSI	01/08/2019	\$ 9,677.85	\$ 9,677.85	8 - Printed	40113620-6542
56190162	WEINHARDT PARTY	01/14/2019	\$ 561.00	\$ 561.00	8 - Printed	102410DR-6339
58190194	WEINHARDT PARTY	01/18/2019	\$ 995.50	\$ 995.50	8 - Printed	11149364-6339-08904
58190179	WINNING STREAK	01/07/2019	\$ 668.85	\$ -	0 - Closed	11149365-6411-07472
54190162	WINNING STREAK	01/23/2019	\$ 859.00	\$ -	0 - Closed	11149334-6411-09394
50190114	WINNING STREAK	01/03/2019	\$ 1,108.00	\$ -	0 - Closed	11149313-6411-07240
58190186	WINNING STREAK	01/09/2019	\$ 2,300.00	\$ 2,300.00	8 - Printed	11149365-6411-09280
50190112	WINNING STREAK	01/02/2019	\$ 2,922.00	\$ -	0 - Closed	11149313-6411-07280
54190161	WINNING STREAK	01/23/2019	\$ 4,500.00	\$ 4,500.00	8 - Printed	11149321-6411-09056
54190160	WINNING STREAK	01/16/2019	\$ 5,446.40	\$ 5,446.40	8 - Printed	11149334-6411-09160
62190371	WINTER, WILLIAM	01/23/2019	\$ 3,750.00	\$ 3,750.00	8 - Printed	10228064-6312-03105
58190185	Y-KIKI DIVERS	01/09/2019	\$ 550.00	\$ -	0 - Closed	11149365-6411-09035
58190202	Y-KIKI DIVERS	01/25/2019	\$ 3,300.00	\$ 3,300.00	8 - Printed	11149364-6391-09035
<b>TOTAL:</b>			<b>\$ 598,305.67</b>			

**\$15,000+**  
**January FY19**

<b>PO#</b>	<b>Vendor Name</b>	<b>PO Date</b>	<b>Order Amount</b>	<b>Balance</b>	<b>Status</b>	<b>1st GL Account</b>
62190376	ADVANCED EXCERC	01/25/2019	\$ 122,326.15	\$ 122,326.15	8 - Printed	40113900-6542
75190028	ANTHEM	01/09/2019	\$ 440,000.00	\$ 322,614.38	8 - Printed	10-2305
75190029	BLUE MEDICARE R	01/09/2019	\$ 460,000.00	\$ 327,281.07	8 - Printed	10-2305
63190237	CDW-G	01/03/2019	\$ 55,459.00	\$ 55,459.00	8 - Printed	10235150-6412
75190026	CHC OF MO MEDIC	01/09/2019	\$ 120,000.00	\$ 89,477.40	8 - Printed	10-2301
75190027	DELTA DENTAL OF	01/09/2019	\$ 100,000.00	\$ 88,726.92	8 - Printed	12-3157
75190032	EYEMED VISION C	01/09/2019	\$ 215,000.00	\$ 186,879.37	8 - Printed	10-2307
56190164	GRUENINGER TRAV	01/18/2019	\$ 27,826.00	\$ 15,826.00	8 - Printed	11149520-6398-08436
85190296	HEAVY DUTY EQUI	01/07/2019	\$ 16,499.00	\$ 16,499.00	8 - Printed	40255100-6541
75190031	HODGES- MACE LL	01/09/2019	\$ 100,000.00	\$ 89,175.70	8 - Printed	12-3176
63190244	JOURNEY EDUCATI	01/09/2019	\$ 38,601.36	\$ -	0 - Closed	10235150-6412
97190117	MIDWEST TRANSIT	01/25/2019	\$ 1,063,244.00	\$ -	0 - Closed	40005800-6552
75190034	SUN LIFE ASSURA	01/23/2019	\$ 500,000.00	\$ 418,293.12	8 - Printed	12-3131
75190033	SYMETRA LIFE IN	01/09/2019	\$ 280,000.00	\$ 195,080.28	8 - Printed	10-2304 *
75190030	UNITED HEALTH C	01/09/2019	\$ 900,000.00	\$ 771,660.63	8 - Printed	12-3125 *
58190203	USA TOURS, INC	01/25/2019	\$ 15,890.00	\$ 15,890.00	8 - Printed	11259640-6342-08155
54190165	WIRED TECHNOLOG	01/30/2019	\$ 20,732.00	\$ 20,732.00	8 - Printed	40241018-6541
63190257	WORKFORCE SOFTW	01/18/2019	\$ 63,909.00	\$ -	0 - Closed	10235150-6412
72190012	YMCA TROUT LODG	01/23/2019	\$ 18,280.00	\$ 18,280.00	8 - Printed	10111152-6398
72190013	YMCA TROUT LODG	01/23/2019	\$ 18,280.00	\$ 18,280.00	8 - Printed	10111154-6398
72190011	YMCA TROUT LODG	01/23/2019	\$ 21,628.00	\$ 21,628.00	8 - Printed	10111155-6398
<b>TOTAL:</b>			<b>\$ 4,597,674.51</b>			

## SPOT MARKET REPORT - JANUARY 2019

Purchase Order #	Date	Vendor #	Vendor Name	Comm. Code	QTY	UOM	Unit Price	Description	Object	Account	Amt
61190001	07/05/18	631777	COSTCO	202				8.5 x 11 WHITE COPY PAPER - 30% RECYCLED PAPER - GP SPECTRUM			
61190001					840	EACH	\$ 29.74		1615	\$	24,981.60
61190012	08/15/18	809084	OFFICE ESSENTIALS INCORPORATED	202				8.5 x 11 WHITE COPY PAPER - 30% RECYCLED PAPER - UNIVERSAL			
61190012					840	EACH	\$ 30.50		1615	\$	25,620.00
61190016	09/14/18	809084	OFFICE ESSENTIALS INCORPORATED	202				8.5 x 11 WHITE COPY PAPER - 30% RECYCLED PAPER - UNIVERSAL			
61190016					840	EACH	\$ 31.90		1615	\$	26,796.00
61190018	10/15/18	622854	CONTRACT PAPER GROUP, INC	202				8.5 x 11 WHITE COPY PAPER - 30% RECYCLED PAPER - GEORGIA PACIFIC SPECTRUM			
61190018					840	EACH	\$ 31.89		1615	\$	26,787.60
61190023	12/20/18	632285	DUTCH HOLLOW SERVICES & SUPPLIES INC.	202				8.5 x 11 WHITE COPY PAPER - 30% RECYCLED PAPER - UNIVERSAL #20030			
61190023					840	EACH	\$ 31.72		1615	\$	26,644.80
85190141	07/31/18	615999	FROESEL OIL CO, INC	400				RFG REG UNLEADED			
85190141					204	EACH	\$ 2.25		6486	\$	458.80
85190141					410	EACH	\$ 2.36	ULS #2 DIESEL	6486	\$	966.78
85190141					1	EACH	\$ 301.44	STATE AND FEDERAL TAXES AND FEES	6486	\$	301.44
85190141					1097	EACH	\$ 2.25	RFG REG UNLEADED	6486	\$	2,467.15
85190171	08/17/18	615999	FROESEL OIL CO, INC	400				RFG REG UNLEADED			
85190171					591	EACH	\$ 2.12		6486	\$	1,251.74
85190171					384	EACH	\$ 2.23	ULS #2 DIESEL	6486	\$	855.94
85190171					1	EACH	\$ 222.88	STATE AND FEDERAL TAXES AND FEES	6486	\$	222.88

85190171					250	EACH	\$	2.12	RFG REG UNLEADED			
85190171										6486	\$	529.50
85190171					40	EACH	\$	2.23	ULS#2 DIESEL			
85190171										6486	\$	89.16
85190194	08/28/18	615999	FROESEL OIL CO, INC	400								
85190194					1570	EACH	\$	2.16	RFG REG UNLEADED			
85190194										6486	\$	3,388.06
85190194					330	EACH	\$	2.24	ULS #2 DIESEL			
85190194										6486	\$	738.87
85190194					1	EACH	\$	410.61	STATE AND FEDERAL TAXES AND FEES			
85190194										6486	\$	410.61
85190194					431	EACH	\$	2.16	RFG REG UNLEADED			
85190194										6486	\$	930.10
85190199	09/04/18	615999	FROESEL OIL CO, INC	400								
85190199					1650	EACH	\$	2.13	RFG REG UNLEADED			
85190199										6486	\$	3,512.69
85190199					375	EACH	\$	2.25	ULS #2 DIESEL			
85190199										6486	\$	844.76
85190199					1	EACH	\$	435.98	STATE AND FEDERAL TAXES AND FEES			
85190199										6486	\$	435.98
85190199					450	EACH	\$	2.13	RFG REG UNLEADED			
85190199										6486	\$	958.01
85190218	09/12/18	615999	FROESEL OIL CO, INC	400								
85190218					1773	EACH	\$	2.04	RFG REG UNLEADED			
85190218										6486	\$	3,624.01
85190218					340	EACH	\$	2.34	ULS #2 DIESEL			
85190218										6486	\$	794.92
85190218					1	EACH	\$	447.15	STATE AND FEDERAL TAXES AND FEES			
85190218										6486	\$	447.15
85190218					430	EACH	\$	2.04	RFG REG UNLEADED			
85190218										6486	\$	878.92
85190231	09/25/18	615999	FROESEL OIL CO, INC	400								
85190231					1299	EACH	\$	2.10	RFG REG UNLEADED			
85190231										6486	\$	2,726.60
85190231					342	EACH	\$	2.39	ULS #2 DIESEL			
85190231										6486	\$	817.04
85190231					1	EACH	\$	359.89	STATE AND FEDERAL TAXES AND FEES			
85190231										6486	\$	359.89
85190231					402	EACH	\$	2.10	RFG REG UNLEADED			
85190231										6486	\$	843.80
85190240	10/10/18	615999	FROESEL OIL CO, INC	400								
85190240					1463	EACH	\$	2.18	RFG REG UNLEADED			
85190240										6486	\$	3,187.88
85190240					371	EACH	\$	2.44	ULS #2 DIESEL			
85190240										6486	\$	904.87

85190240				1	EACH	\$	398.81	STATE AND FEDERAL TAXES AND FEES			
85190240									6486	\$	398.81
85190240				430	EACH	\$	2.18	RFG REG UNLEADED			
85190240									6486	\$	936.97
			ENERGY PETROLEUM								
85190265	11/08/18	642477	COMPANY	400							
85190265				1671	EACH	\$	2.13	NO LEAD 87 OCT RFG			
85190265									6486	\$	3,559.66
85190265				430.1	EACH	\$	2.13	NO LEAD 87 OCT RFG			
85190265									6486	\$	916.11
85190265				260	EACH	\$	2.55	#2 ULTRA LS DIESEL			
85190265									6486	\$	663.00
85190265				1	EACH	\$	294.34	FOR INVOICE 647834 FEDERAL AND STATE TAXES			
85190265									6486	\$	294.34
85190265				1	EACH	\$	75.76	FOR INVOICE 647836 FEDERAL AND STATE TAXES			
85190265									6486	\$	75.76
85190265				1	EACH	\$	45.85	FOR INVOICE 651276 FEDERAL AND STATE TAXES			
85190265									6486	\$	45.85
			ENERGY PETROLEUM								
85190271	11/20/18	642477	COMPANY	400							
85190271				430	EACH	\$	1.96	NO LEAD 87 OCT RFG			
85190271									6486	\$	842.80
85190271				2270	EACH	\$	1.96	NO LEAD 87 OCT RFG			
85190271									6486	\$	4,449.20
85190271				230	EACH	\$	2.45	#2 ULTRA LS DIESEL			
85190271									6486	\$	563.50
85190271				1	EACH	\$	75.74	FOR INVOICE 647834 FEDERAL AND STATE TAXES			
85190271									6486	\$	75.74
85190271				1	EACH	\$	399.82	FOR INVOICE 647836 FEDERAL AND STATE TAXES			
85190271									6486	\$	399.82
85190271				1	EACH	\$	40.56	FOR INVOICE 651276 FEDERAL AND STATE TAXES			
85190271									6486	\$	40.56
			ENERGY PETROLEUM								
85190283	12/06/18	642477	COMPANY	400							
85190283				425.1	EACH	\$	1.76	NO LEAD 87 OCT RFG			
85190283									6486	\$	748.18
85190283				1408	EACH	\$	1.73	NO LEAD 87 OCT RFG			
85190283									6486	\$	2,435.32
85190283				1	EACH	\$	74.88	FOR #6193473 FEDERAL AND STATE TAXES			
85190283									6486	\$	74.88

85190283				1	EACH	\$	247.94	FOR #6193474 FEDERAL AND STATE TAXES			
85190283									6486	\$	247.94
			ENERGY PETROLEUM								
85190284	12/06/18	642477	COMPANY	400							
85190284				908	EACH	\$	1.74	NO LEAD 87 OCT RFG			
85190284									6486	\$	1,579.92
85190284				290	EACH	\$	1.74	NO LEAD 87 OCT RFG			
85190284									6486	\$	504.60
85190284				402	EACH	\$	2.32	#2 ULTRA PREM LS DIESEL			
85190284									6486	\$	931.35
85190284				1	EACH	\$	159.93	FOR #1451221 FEDERAL AND STATE TAXES			
85190284									6486	\$	159.93
85190284				1	EACH	\$	51.08	FOR #1451222 FEDERAL AND STATE TAXES			
85190284									6486	\$	51.08
85190284				1	EACH	\$	70.89	FOR #1451220 FEDERAL AND STATE TAXES			
85190284									6486	\$	70.89
85190301	01/14/19	642477	ENERGY PETROLEUM COMP.	400							
85190301				420	EACH	\$	1.56	NO LEAD 87 OCT RFG			
85190301									6486		656.75
85190301				1370	EACH	\$	1.56	NO LEAD 87 OCT RFG			
85190301									6486		2,142.27
85190301				232	EACH	\$	1.93	#2 ULTRA LS DIESEL			
85190301									6486		447.76
85190301				1	EACH	\$	73.97	FOR 6196918 FEDERAL AND STATE TAXES			
85190301									6486		73.97
85190301				1	EACH	\$	40.91	FOR 61969201 FEDERAL AND STATE TAXES			
85190301									6486		40.91
85190301				1	EACH	\$	241.30	FOR 6196919 FEDERAL AND STATE TAXES			
85190301									6486		241.30
85190307	01/18/19	642477	ENERGY PETROLEUM COMP.	400							
85190307				1561	EACH	\$	1.58	NO LEAD 87 OCT RFG			
85190307									6486		2,466.54
85190307				425	EACH	\$	1.58	NO LEAD 87 OCT RFG			
85190307									6486		671.50
85190307				1	EACH	\$	274.95	FOR 1451253 FEDERAL AND STATE TAXES			
85190307									6486		274.95
85190307				1	EACH	\$	74.86	FOR 1451252 FEDERAL AND STATE TAXES			
85190307									6486		74.86
97190059	09/12/18	615999	FROESEL OIL CO, INC	500							
								CONVENIENT PURCHASE ORDER FOR THE PURCHASE OF PREMIUM ULTRA LOW SULFUR #2 DIESEL FUEL FOR SCHOOL BUSES. BID #19P-30			
97190059				7500	EACH	\$	2.33				
97190059									6486	\$	17,467.50
97190059				7500	EACH	\$	0.00	FEDERAL OIL SPILL FEE			

97190059							6486	\$	16.05
97190059				7500	EACH	\$ 0.00 MO AGI TAX PER GAL			
97190059				7500	EACH	\$ 0.17 MO STATE TAX PER GAL	6486	\$	7.50
97190059				7500	EACH	\$ - FED SUPER FUND TAX PER GAL EXTRA	6486	\$	1,275.00
97190059				7500	EACH	\$ 0.00 MO ADG INSPECTION FEE TAX PER GAL	6486	\$	-
97190059				7500	EACH	\$ 0.00 MO USTD TRANSP LOAD FEE TAX PER GAL	6486	\$	5.25
97190059				7500	EACH	\$ 0.00 MO USTD TRANSP LOAD FEE TAX PER GAL	6486	\$	18.75
97190063	09/26/18	800559	KIESEL COMPANY	500					
						7000 GALLONS OF PREMIUM ULTRA LOW SULFUR #2 DIESEL FUEL FOR SCHOOL BUSES.			
97190063				7000	EACH	\$ 2.32			
97190063				7000	EACH	\$ 0.00 FED. OIL SPILL FEE	6486	\$	16,240.00
97190063				7000	EACH	\$ 0.00 MO AGI TAX PER GAL EXTRA	6486	\$	14.98
97190063				7000	EACH	\$ 0.00 MO AGI TAX PER GAL EXTRA	6486	\$	7.00
97190063				7000	EACH	\$ 0.17 MO STATE TAX PER GAL	6486	\$	1,190.00
97190063				7000	EACH	\$ 0.00 MO ADG INSP FEE TAX PER GAL	6486	\$	4.90
97190063				7000	EACH	\$ 0.00 MO USTD TRANSP. LOAD FEE TAX PER GAL	6486	\$	17.50
97190066	10/02/18	615999	FROESEL OIL CO, INC	500					
						PREMIUM, ULTRA LOW SULFUR, #2 DIESEL FUEL. BID #19P-39			
97190066				8000	EACH	\$ 2.35			
97190066				8000	EACH	\$ 0.00 FED OIL SPILL FEE	6486	\$	18,792.00
97190066				8000	EACH	\$ 0.00 MO AGI TAX PER GAL. EXTRA	6486	\$	17.12
97190066				8000	EACH	\$ 0.17 MO STATE TAX PER GAL	6486	\$	8.00
97190066				8000	EACH	\$ 0.00 MO ADG INSP FEE TAX PER GAL	6486	\$	1,360.00
97190066				8000	EACH	\$ 0.00 MO ADG INSP FEE TAX PER GAL	6486	\$	5.60
97190066				8000	EACH	\$ 0.00 MO USTD TRANSP. LOAD FEE TAX PER GAL	6486	\$	20.00
97190070	10/10/18	800559	KIESEL COMPANY	500					
						PREMIUM ULTRA LOW SULFUR, #2 DIESEL FUEL FOR SCHOOL BUSES. BID #19P-41			
97190070				7350	EACH	\$ 2.50			
97190070				7350	EACH	\$ 0.00 FED OIL SPILL FEE	6486	\$	18,367.65
97190070				7350	EACH	\$ 0.00 FED OIL SPILL FEE			

97190070							6486	\$	15.73
97190070				7350	EACH	\$ 0.00 MO. AGI TAX PER GALLON EXTRA			
97190070							6486	\$	7.35
97190070				7350	EACH	\$ - FED SUPER FUND TAX PER GALLON EXTRA			
97190070							6486	\$	-
97190070				7350	EACH	\$ 0.17 MO STATE TAX PER GALLON			
97190070							6486	\$	1,249.50
97190070				7350	EACH	\$ 0.00 MO. ADG INSP. FEE TAX PER GALLON			
97190070							6486	\$	5.15
97190070				7350	EACH	\$ 0.00 MO USTD TRANSP. LOAD FEE TAX PER GALLON			
97190070							6486	\$	18.38
97190073	10/22/18	800559	KIESEL COMPANY	500					
						PREMIUM ULTRA LOW SULFUR, #2 DIESEL FUEL			
97190073				7350	EACH	\$ 2.48 FOR SCHOOL BUSES, BID #19P-45			
97190073							6486	\$	18,228.00
97190073				7350	EACH	\$ 0.00 FED OIL SPILL FEE			
97190073							6486	\$	15.73
97190073				7350	EACH	\$ 0.00 MO AGI TAX PER GAL EXTRA			
97190073							6486	\$	7.35
97190073				7350	EACH	\$ - FED SUPER FUND TAX PER GAL EXTRA			
97190073							6486	\$	-
97190073				7350	EACH	\$ 0.17 MO STATE TAX PER GAL			
97190073							6486	\$	1,249.50
97190073				7350	EACH	\$ 0.00 MO ADG INSP FEE TAX PER GAL			
97190073							6486	\$	5.15
97190073				7350	EACH	\$ 0.00 MO USTD TRANSP LOAD FEE TAX PER GAL			
97190073							6486	\$	18.38
97190081	11/01/18	800559	KIESEL COMPANY	500					
						PREMIUM ULTRA LOW SULFUR, #2 DIESEL FUEL			
97190081				7350	EACH	\$ 2.34 FOR SCHOOL BUSES, BID #19P-52			
97190081							6486	\$	17,191.65
97190081				7350	EACH	\$ 0.00 FED OIL SPILL FEE			
97190081							6486	\$	15.73
97190081				7350	EACH	\$ 0.00 MO AGI TAX PER GAL EXTRA			
97190081							6486	\$	7.35
97190081				7350	EACH	\$ - FED SUPER FUND TAX PER GAL EXTRA			
97190081							6486	\$	-
97190081				7350	EACH	\$ 0.17 MO STATE TAX PER GAL			
97190081							6486	\$	1,249.50
97190081				7350	EACH	\$ 0.00 MO ADG INSP FEE TAX PER GAL			
97190081							6486	\$	5.15
97190081				7350	EACH	\$ 0.00 MO USTD TRANSP LOAD FEE TAX PER GAL			
97190081							6486	\$	18.38





97190098								6486	\$	5.25
97190098				7500	EACH	\$	0.00	MO USTD TRANSP. LOAD FEE TAX PER GAL		
97190098								6486	\$	18.75
97190100	12/14/18	800559	KIESEL COMPANY	500						
97190100				7300	EACH	\$	1.74	PREMIUM, ULTRA LOW SULFUR, #2 DIESEL FUEL FOR SCHOOL BUSES.		
97190100								6486	\$	12,698.35
97190100				7300	EACH	\$	0.00	FED OIL SPILL FEE		
97190100								6486	\$	15.62
97190100				7300	EACH	\$	0.00	MO AGI TAX PER GAL EXTRA		
97190100								6486	\$	7.30
97190100				7300	EACH	\$	0.17	MO STATE TAX PER GALLON		
97190100								6486	\$	1,241.00
97190100				7300	EACH	\$	0.00	MO ADG INSP FEE TAX PER GALLON		
97190100								6486	\$	5.11
97190100				7300	EACH	\$	0.00	MO USTD TRANSP LOAD FEE TAX PER GALLON		
97190100								6486	\$	18.25
97190104	01/16/19	642477	ENERGY PETROLEUM COMP	500						
97190104				7500	EACH	\$	1.50	PREMIUM, ULTRA LOW SULFUR #2 DIESEL		
97190104								6486		11,212.50
97190104				7500	EACH	\$	0.00	FED OIL SPILL FEE		
97190104								6486		16.05
97190104				7500	EACH	\$	0.00	MO AGI TAX PER GAL EXTRA		
97190104								6486		7.50
97190104				7500	EACH	\$	0.17	MO STATE TAX PER GAL		
97190104								6486		1,275.00
97190104				7500	EACH	\$	0.00	MO ADG INSP FEE TAX PER GAL		
97190104								6486		5.25
97190104				7500	EACH	\$	0.00	MO USTD TRANSP LOAD FEE TAX PER GAL		
97190104								6486		18.75
85190167	08/09/18	851946	NEW SYSTEM CARPET	401						
85190167				400	EACH	\$	17.50	TRASH CAN LINERS 40" X 48" - 16 MICRON HIGH DENSITY ONLY - CLEAR - START SEALED (250/CS) APPROX CASE WGT 21.6# INTERPLAST/PITT #MR20283 MC		
85190167								6411	\$	7,000.00
85190168	08/09/18	914674	UNIPAK CORP.	401						
85190168				100	EACH	\$	15.40	TRASH CAN LINERS 24" X 23" - 0.4 MIL LINEAR LOW DENSITY ONLY - CLEAR - STAR SEALED 1000/CS - APPROX CASE WGT 14.72# UPS #24R		
85190168								6411	\$	1,540.00
85190176	08/17/18	800066	INDUSTRIAL SOAP CO	401						

